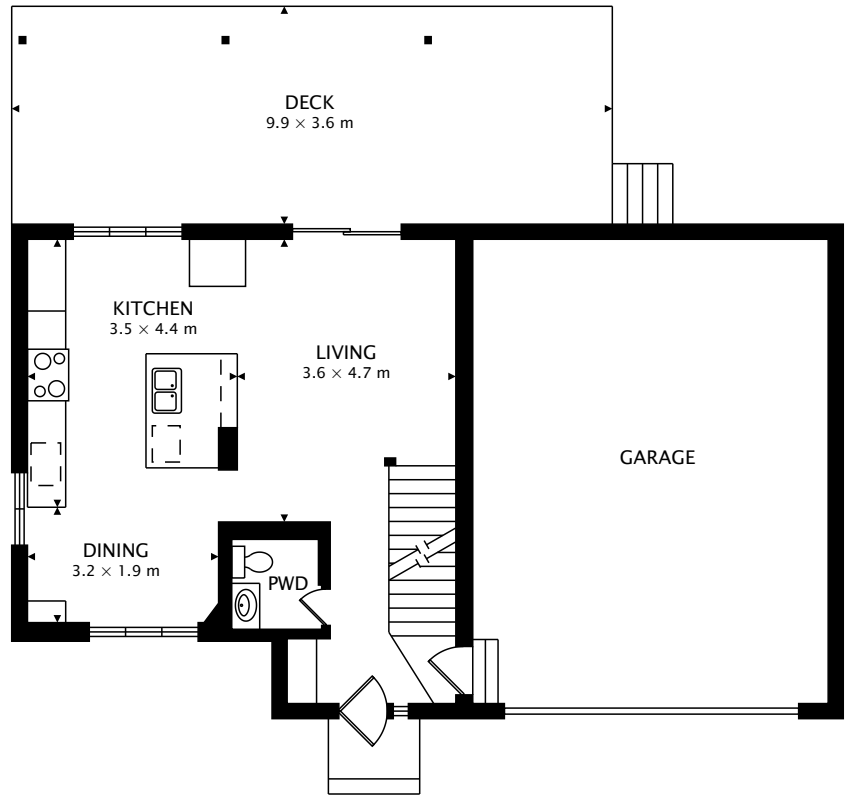
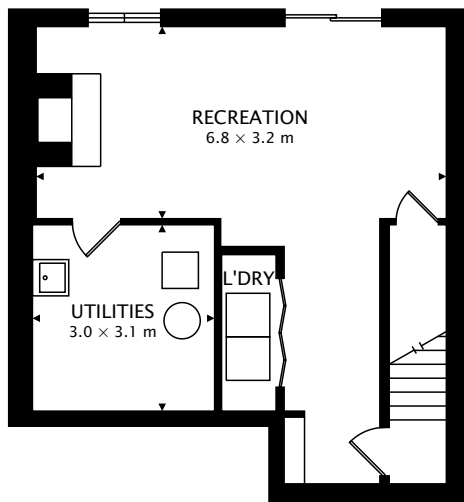


SECOND
58.0 m²



MAIN
56.8 m²



LOWER
53.1 m² BELOW GRADE

TOTAL
114.8 m² + 53.1 m² BELOW GRADE



CAPTURED ON: 6 FEB 2019
DIMENSIONS, AREAS, LAYOUTS AND DETAILS ARE APPROXIMATE
AND SHOULD BE CONSIDERED ILLUSTRATIVE ONLY.