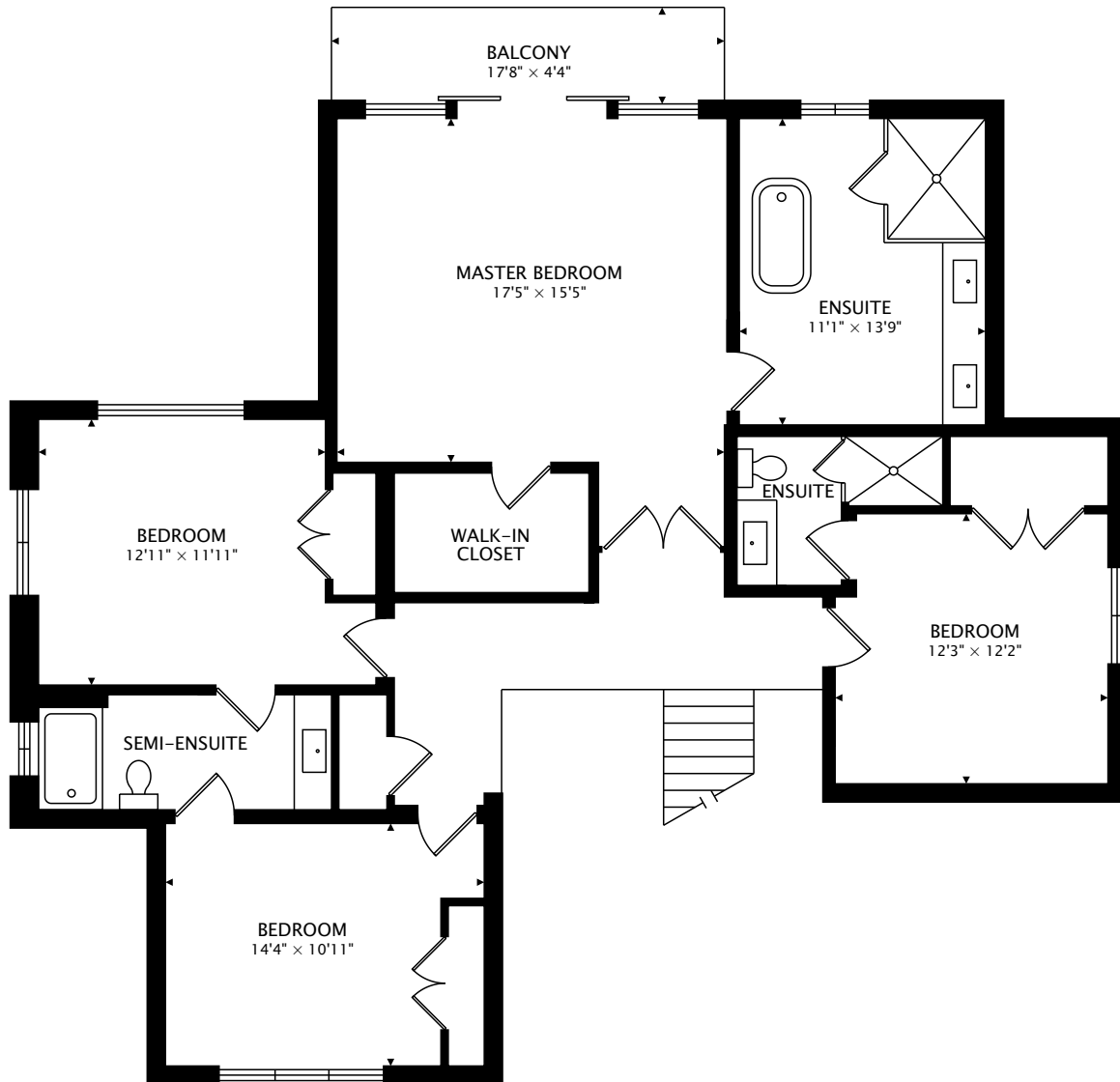


MAIN
2240 sq ft

TOTAL
3691 sq ft + 2247 sq ft BELOW GRADE)



CAPTURED ON: 23 MAY 2018
DIMENSIONS, AREAS, LAYOUTS AND DETAILS ARE APPROXIMATE
AND SHOULD BE CONSIDERED ILLUSTRATIVE ONLY.

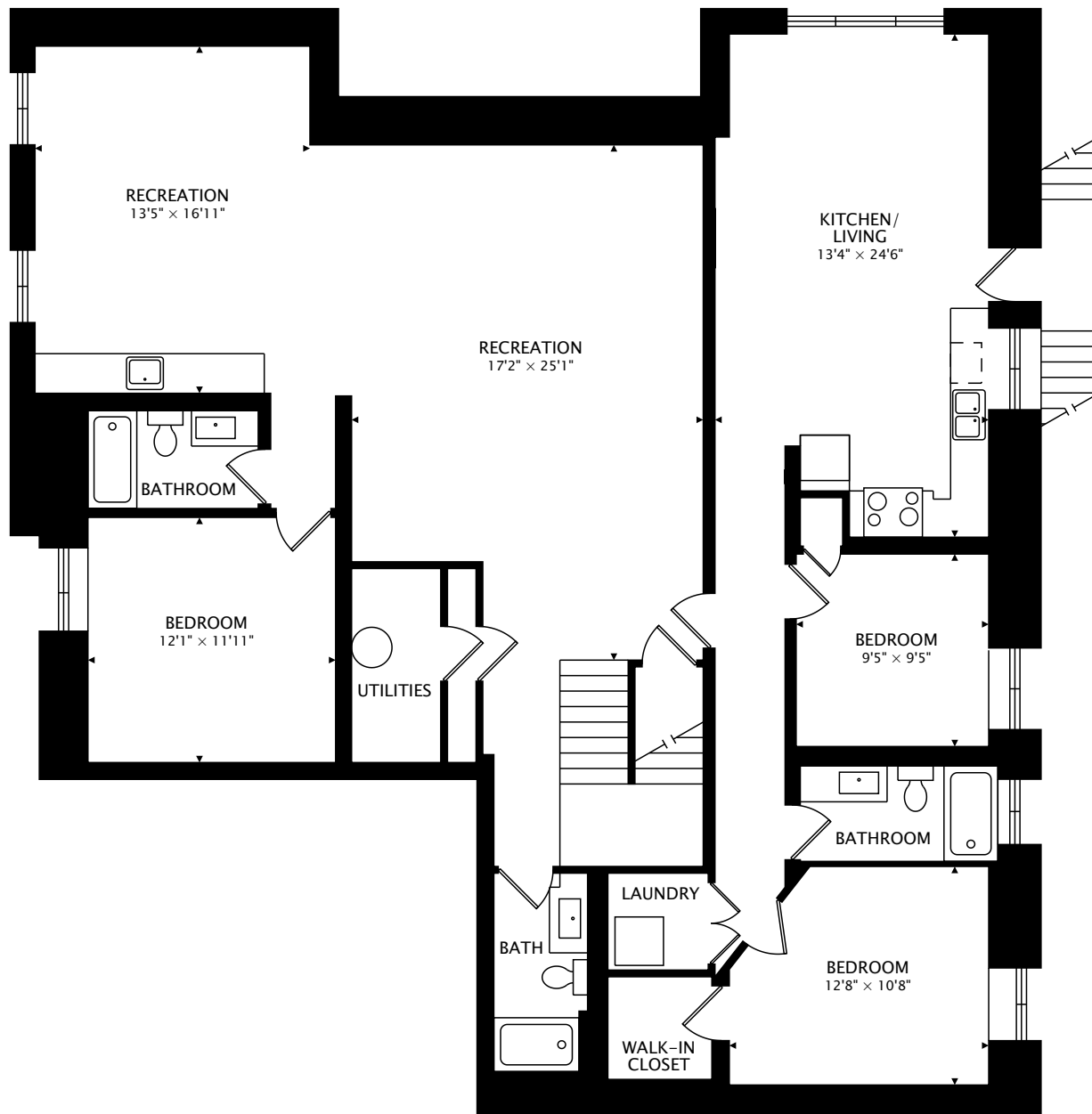


SECOND
1451 sq ft

TOTAL
3691 sq ft + 2247 sq ft BELOW GRADE)



CAPTURED ON: 23 MAY 2018
DIMENSIONS, AREAS, LAYOUTS AND DETAILS ARE APPROXIMATE
AND SHOULD BE CONSIDERED ILLUSTRATIVE ONLY.



LOWER
2247 sq ft BELOW GRADE

TOTAL
3691 sq ft + 2247 sq ft BELOW GRADE)



CAPTURED ON: 23 MAY 2018
DIMENSIONS, AREAS, LAYOUTS AND DETAILS ARE APPROXIMATE
AND SHOULD BE CONSIDERED ILLUSTRATIVE ONLY.