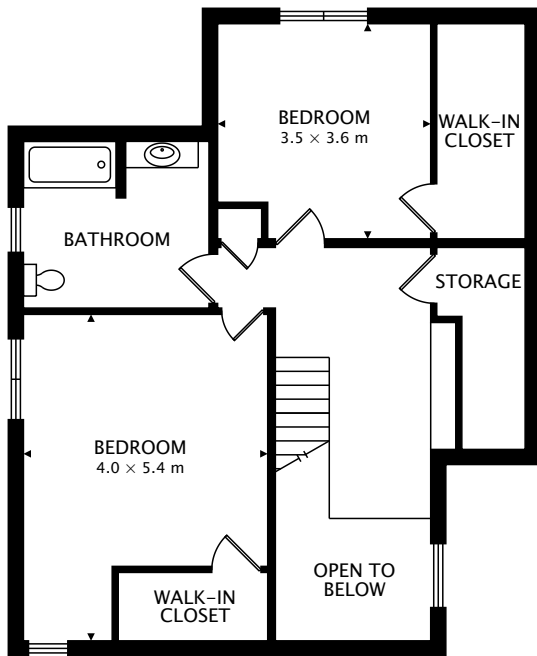


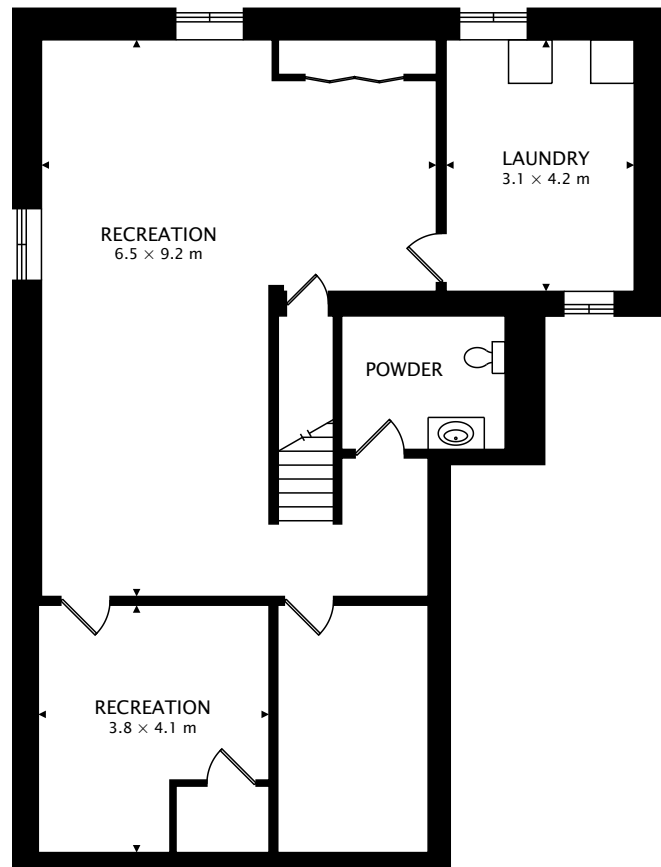
TOTAL
251.2 m² + 124.4 m² BELOW GRADE



CAPTURED ON: 8 JUN 2018
DIMENSIONS, AREAS, LAYOUTS AND DETAILS ARE APPROXIMATE
AND SHOULD BE CONSIDERED ILLUSTRATIVE ONLY.



SECOND
74.2 m²



LOWER
124.4 m² BELOW GRADE

TOTAL
251.2 m² + 124.4 m² BELOW GRADE



CAPTURED ON: 8 JUN 2018
DIMENSIONS, AREAS, LAYOUTS AND DETAILS ARE APPROXIMATE
AND SHOULD BE CONSIDERED ILLUSTRATIVE ONLY.