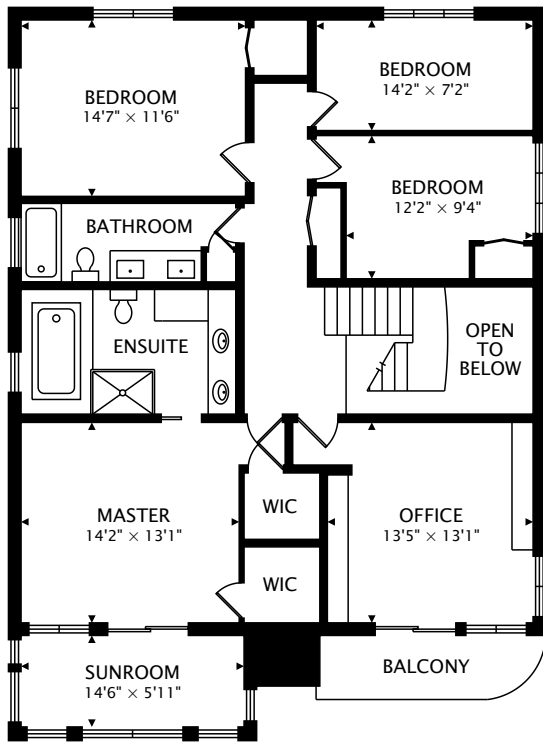


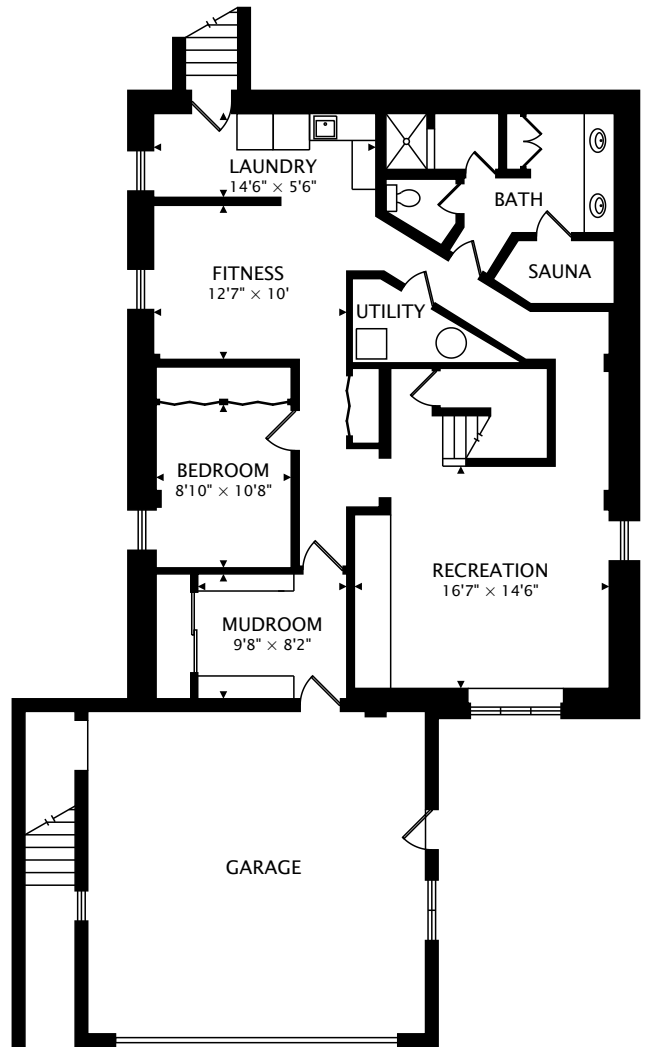
TOTAL
3185 sq ft + 1353 sq ft BELOW GRADE



CAPTURED ON: 5 MAR 2019
DIMENSIONS, AREAS, LAYOUTS AND DETAILS ARE APPROXIMATE
AND SHOULD BE CONSIDERED ILLUSTRATIVE ONLY.



SECOND
1429 sq ft



LOWER
1353 sq ft BELOW GRADE

TOTAL
3185 sq ft + 1353 sq ft BELOW GRADE



CAPTURED ON: 5 MAR 2019
DIMENSIONS, AREAS, LAYOUTS AND DETAILS ARE APPROXIMATE
AND SHOULD BE CONSIDERED ILLUSTRATIVE ONLY.