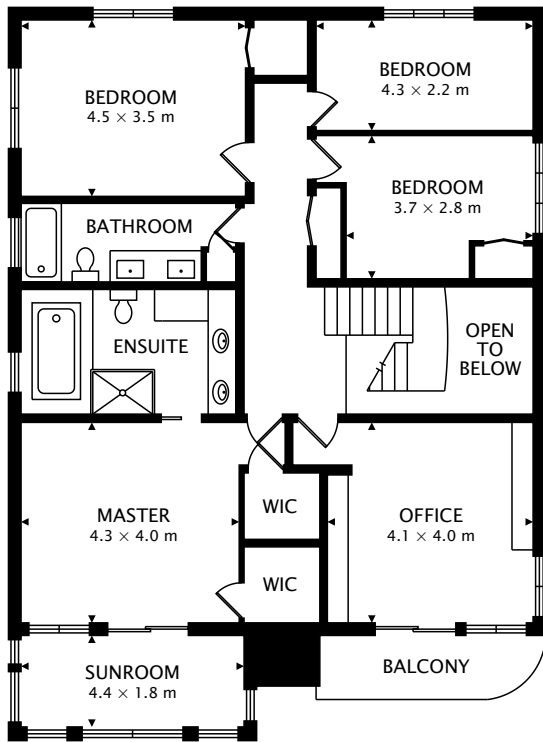


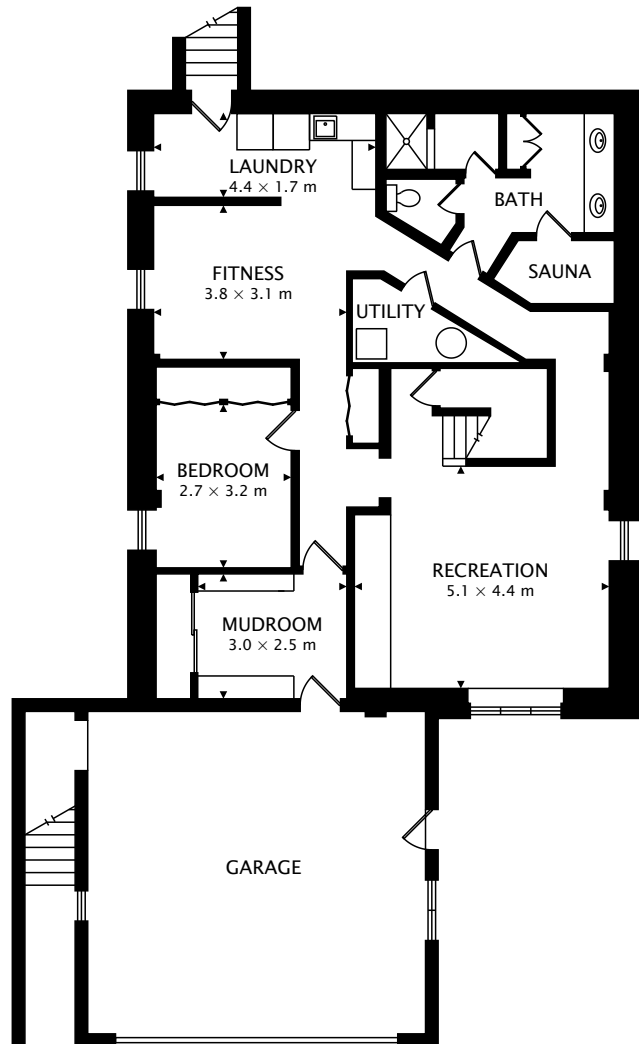
TOTAL
295.9 m² + 125.7 m² BELOW GRADE



CAPTURED ON: 5 MAR 2019
DIMENSIONS, AREAS, LAYOUTS AND DETAILS ARE APPROXIMATE
AND SHOULD BE CONSIDERED ILLUSTRATIVE ONLY.



SECOND
132.7 m²



LOWER
125.7 m² BELOW GRADE

TOTAL
295.9 m² + 125.7 m² BELOW GRADE



CAPTURED ON: 5 MAR 2019
DIMENSIONS, AREAS, LAYOUTS AND DETAILS ARE APPROXIMATE
AND SHOULD BE CONSIDERED ILLUSTRATIVE ONLY.