

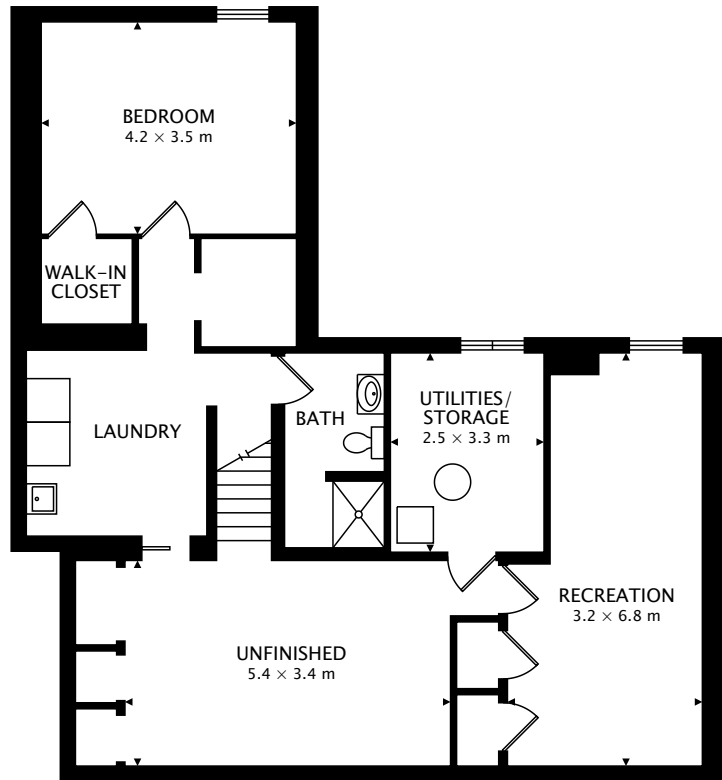
MAIN
142.0 m²

TOTAL
142.0 m² + 109.5 m² BELOW GRADE



CAPTURED ON: 15 MAY 2018

DIMENSIONS, AREAS, LAYOUTS AND DETAILS ARE APPROXIMATE
AND SHOULD BE CONSIDERED ILLUSTRATIVE ONLY.



LOWER
109.5 m² BELOW GRADE

TOTAL
142.0 m² + 109.5 m² BELOW GRADE



CAPTURED ON: 15 MAY 2018
DIMENSIONS, AREAS, LAYOUTS AND DETAILS ARE APPROXIMATE
AND SHOULD BE CONSIDERED ILLUSTRATIVE ONLY.