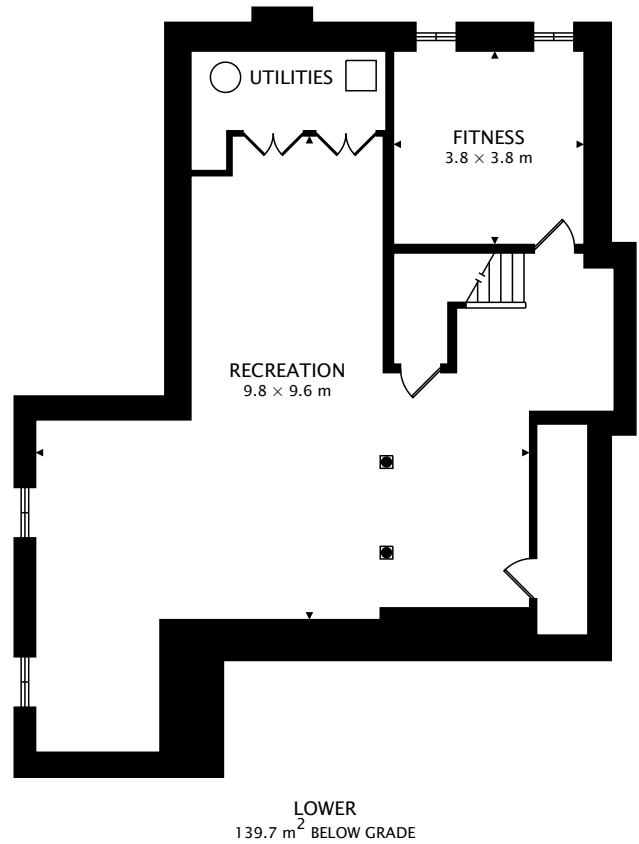
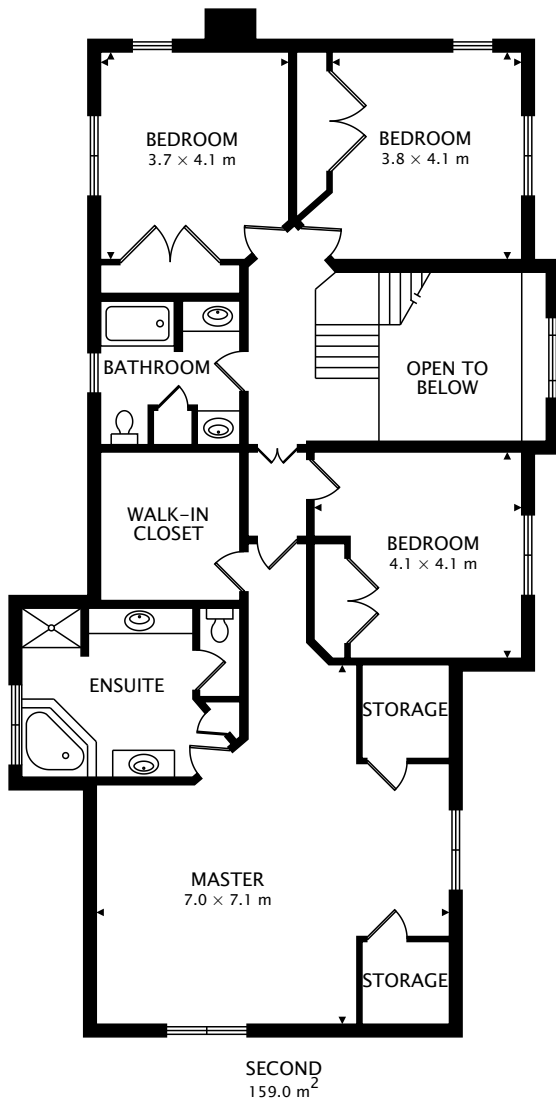


TOTAL
299.5 m² + 139.7 m² BELOW GRADE



CAPTURED ON: 21 MAY 2018

DIMENSIONS, AREAS, LAYOUTS AND DETAILS ARE APPROXIMATE
AND SHOULD BE CONSIDERED ILLUSTRATIVE ONLY.



TOTAL
299.5 m² + 139.7 m² BELOW GRADE



CAPTURED ON: 21 MAY 2018
DIMENSIONS, AREAS, LAYOUTS AND DETAILS ARE APPROXIMATE
AND SHOULD BE CONSIDERED ILLUSTRATIVE ONLY.