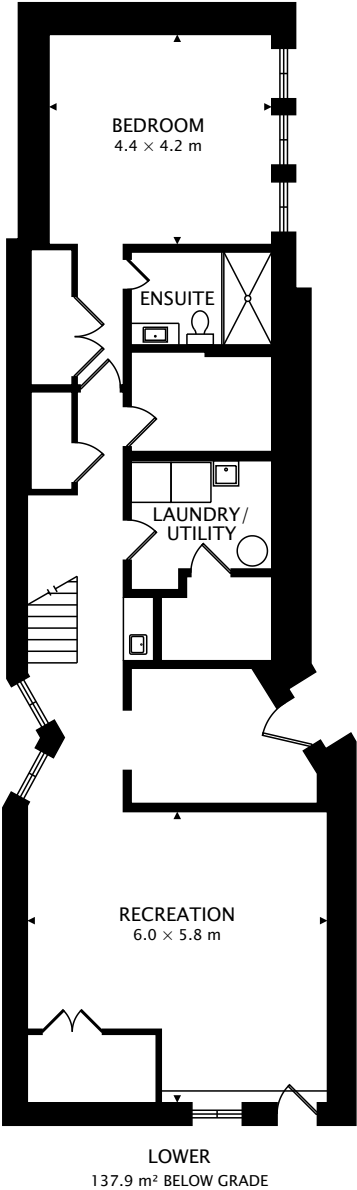
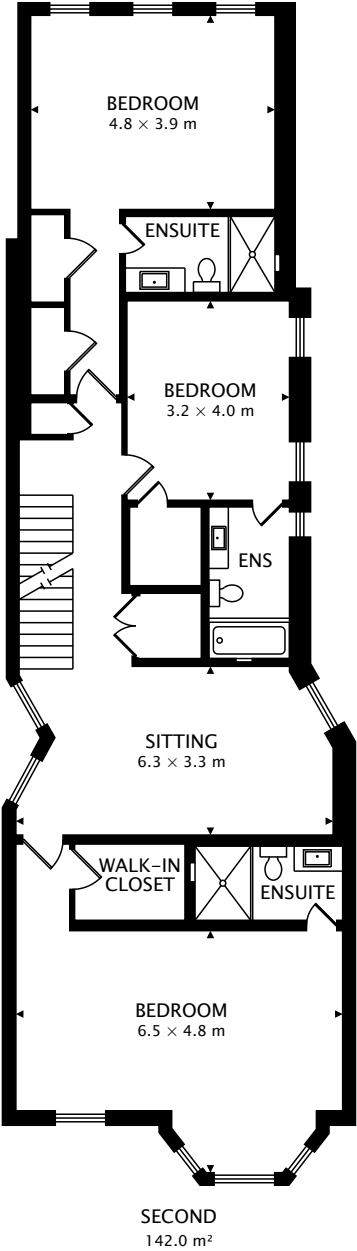
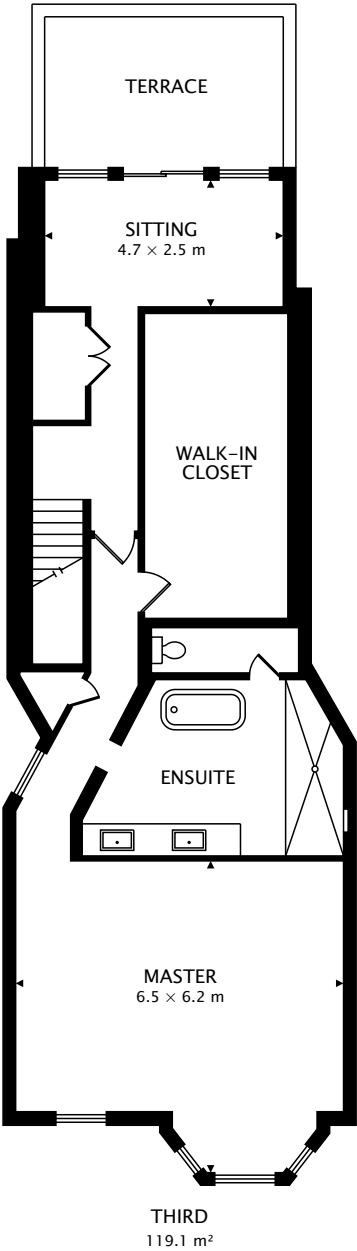


TOTAL
399.8 m² + 137.9 m² BELOW GRADE



CAPTURED ON: 14 JUL 2017
DIMENSIONS, AREAS, LAYOUTS AND DETAILS ARE APPROXIMATE
AND SHOULD BE CONSIDERED ILLUSTRATIVE ONLY.



TOTAL
399.8 m² + 137.9 m² BELOW GRADE



CAPTURED ON: 14 JUL 2017
DIMENSIONS, AREAS, LAYOUTS AND DETAILS ARE APPROXIMATE
AND SHOULD BE CONSIDERED ILLUSTRATIVE ONLY.