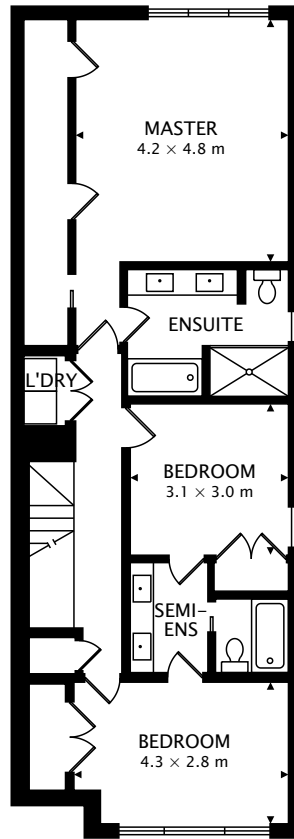


MAIN
94.4 m²

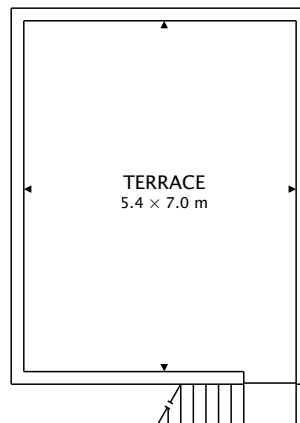
TOTAL
188.7 m² + 88.4 m² BELOW GRADE



CAPTURED ON: 12 MAR 2019
DIMENSIONS, AREAS, LAYOUTS AND DETAILS ARE APPROXIMATE
AND SHOULD BE CONSIDERED ILLUSTRATIVE ONLY.



SECOND
94.4 m²



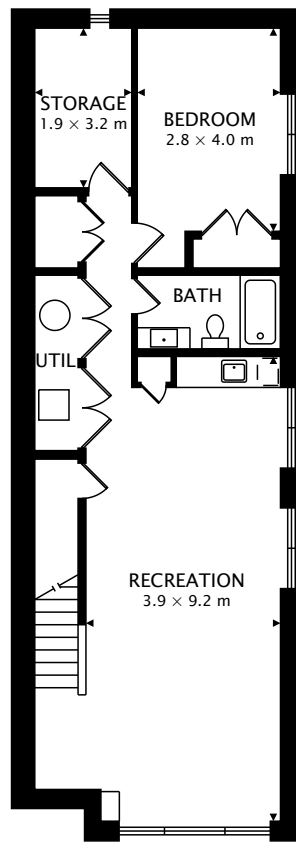
TOTAL

188.7 m² + 88.4 m² BELOW GRADE



CAPTURED ON: 12 MAR 2019

DIMENSIONS, AREAS, LAYOUTS AND DETAILS ARE APPROXIMATE
AND SHOULD BE CONSIDERED ILLUSTRATIVE ONLY.



LOWER
88.4 m² BELOW GRADE

TOTAL
188.7 m² + 88.4 m² BELOW GRADE



CAPTURED ON: 12 MAR 2019
DIMENSIONS, AREAS, LAYOUTS AND DETAILS ARE APPROXIMATE
AND SHOULD BE CONSIDERED ILLUSTRATIVE ONLY.