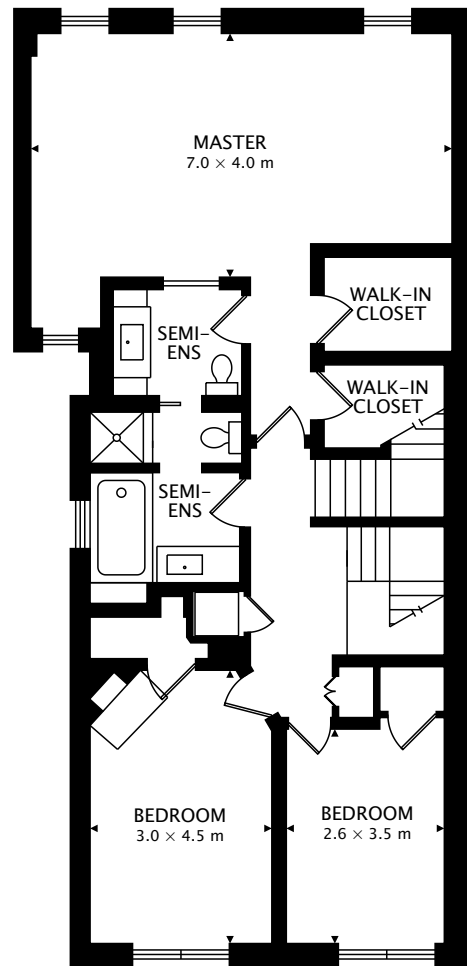


MAIN
109.7 m²

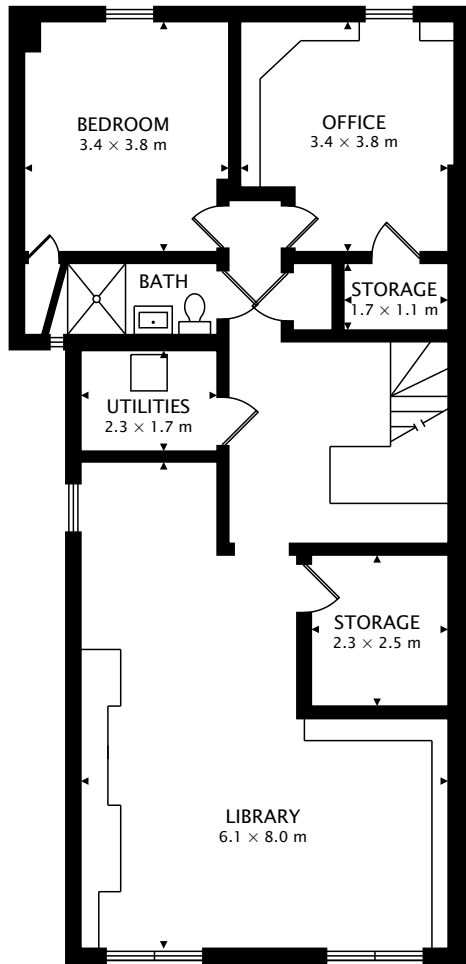


SECOND
104.7 m²

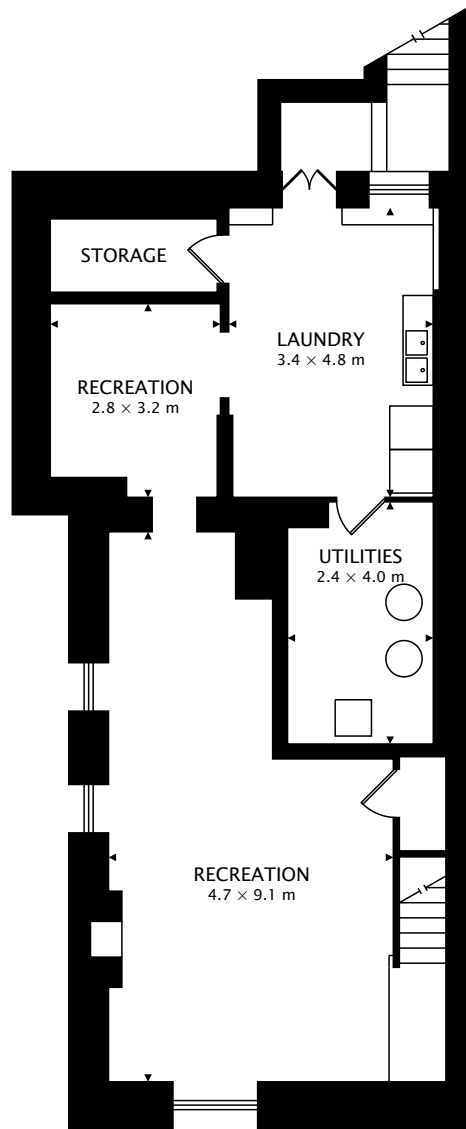
TOTAL
319.1 m² + 108.7 m² BELOW GRADE



CAPTURED ON: 9 MAR 2019
DIMENSIONS, AREAS, LAYOUTS AND DETAILS ARE APPROXIMATE
AND SHOULD BE CONSIDERED ILLUSTRATIVE ONLY.



THIRD
104.7 m²



LOWER
108.7 m² BELOW GRADE

TOTAL
319.1 m² + 108.7 m² BELOW GRADE



CAPTURED ON: 9 MAR 2019
DIMENSIONS, AREAS, LAYOUTS AND DETAILS ARE APPROXIMATE
AND SHOULD BE CONSIDERED ILLUSTRATIVE ONLY.