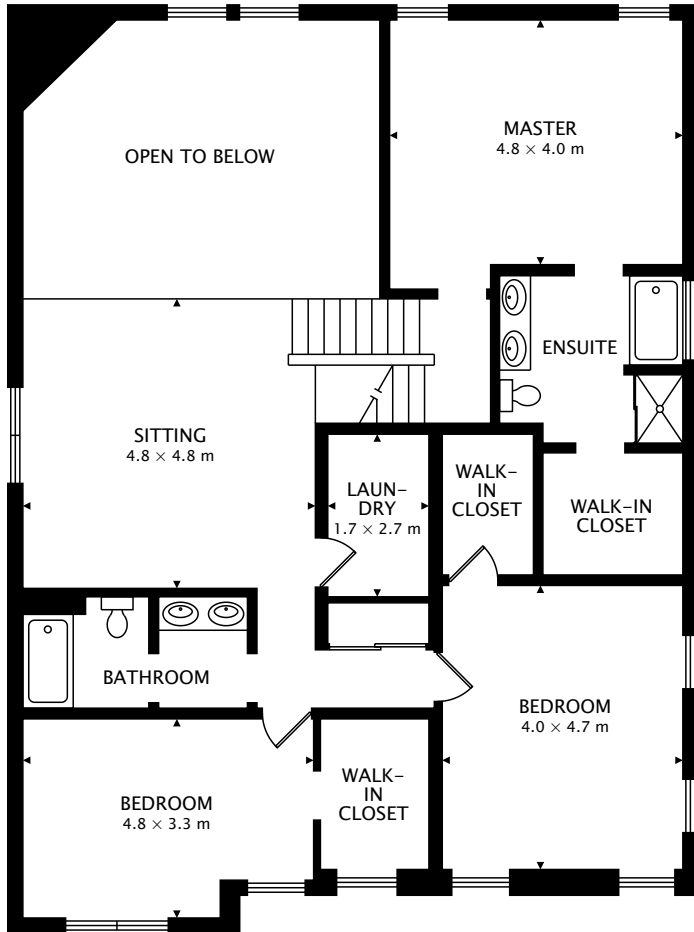


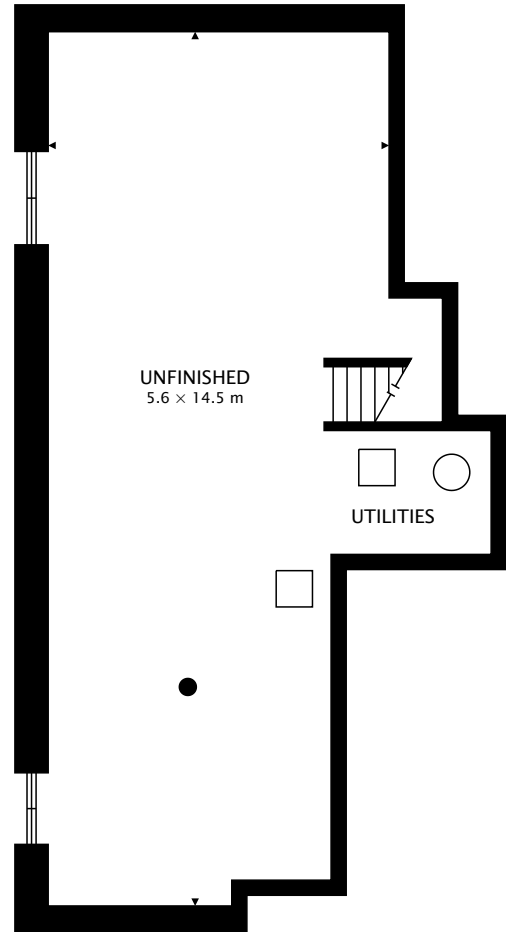
TOTAL
279.7 m² + 96.4 m² BELOW GRADE



CAPTURED ON: 21 AUG 2018
DIMENSIONS, AREAS, LAYOUTS AND DETAILS ARE APPROXIMATE
AND SHOULD BE CONSIDERED ILLUSTRATIVE ONLY.



SECOND
140.5 m²



LOWER
96.4 m² BELOW GRADE

TOTAL
279.7 m² + 96.4 m² BELOW GRADE



CAPTURED ON: 21 AUG 2018
DIMENSIONS, AREAS, LAYOUTS AND DETAILS ARE APPROXIMATE
AND SHOULD BE CONSIDERED ILLUSTRATIVE ONLY.