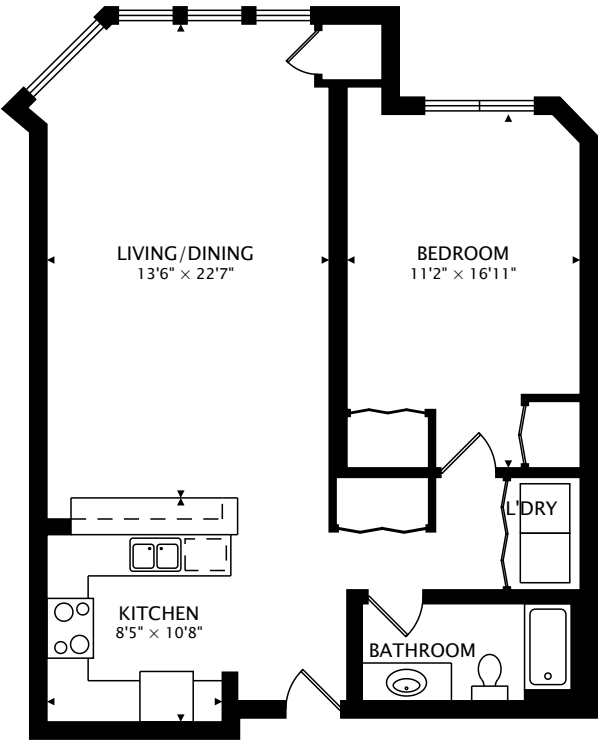
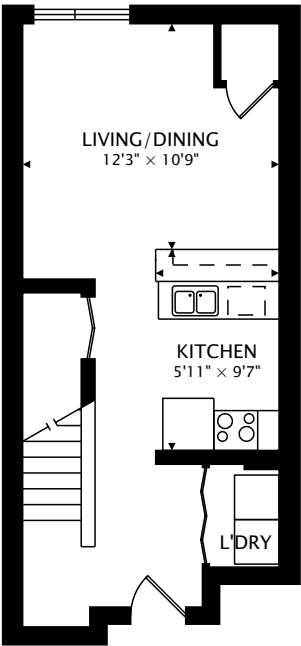


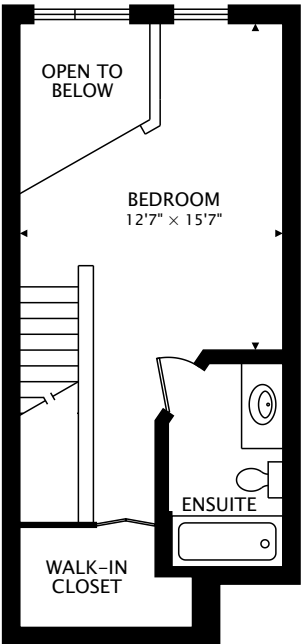
3820 GRAND WAY STREET
LOUIS PARK MN 55416



SUITE #1
859 sq ft

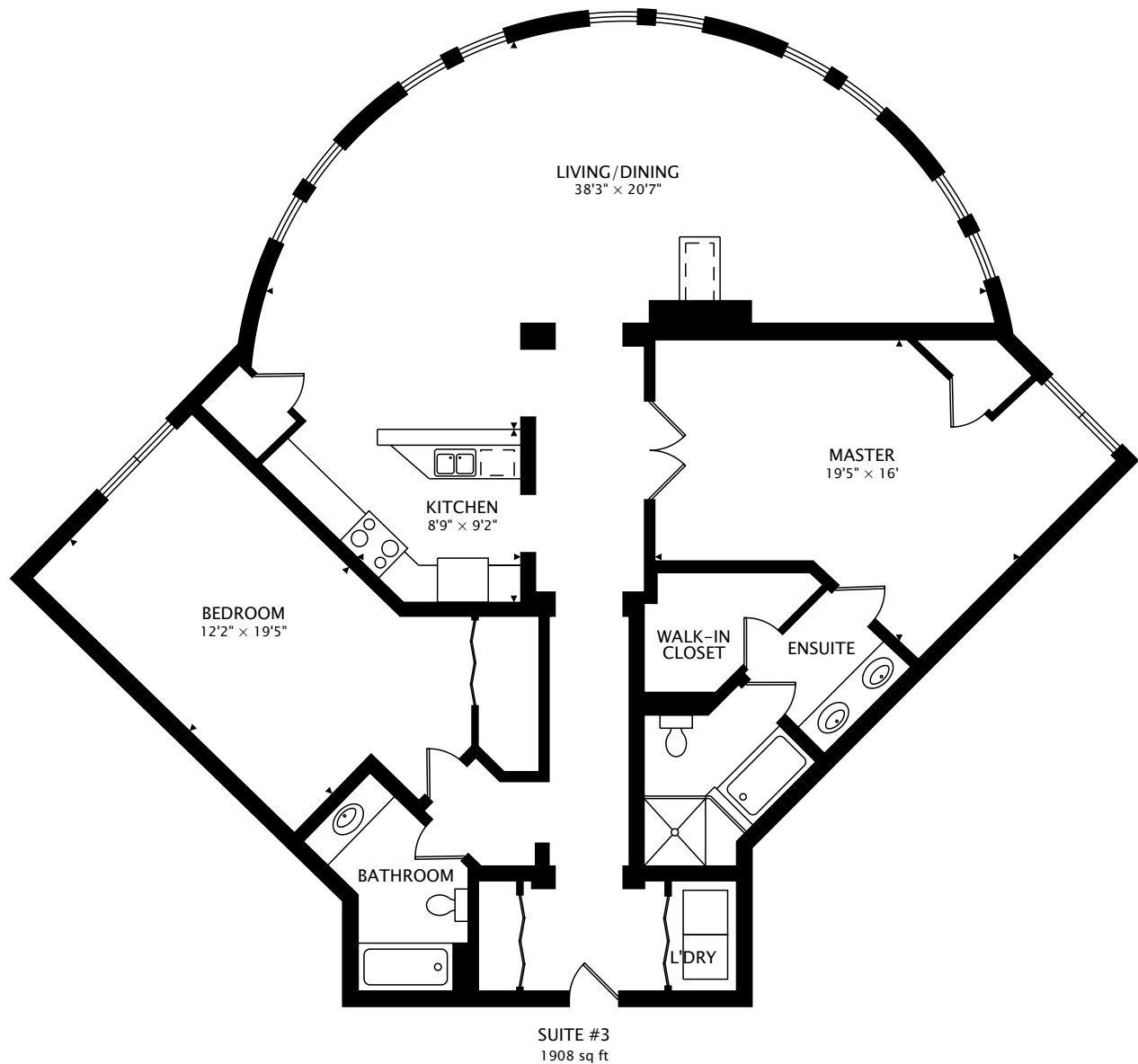


SUITE #2 MAIN
355 sq ft

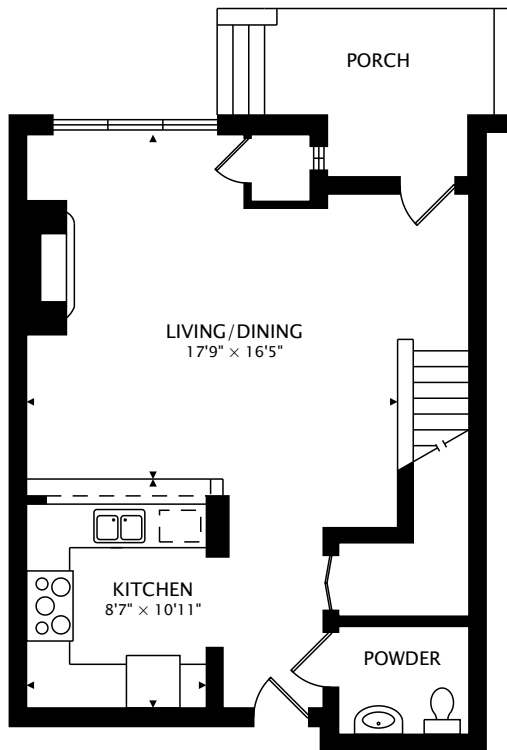


SUITE #2 SECOND
350 sq ft

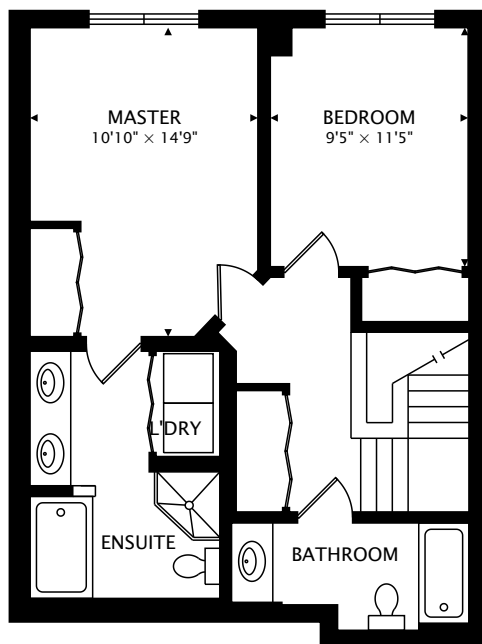
TOTAL



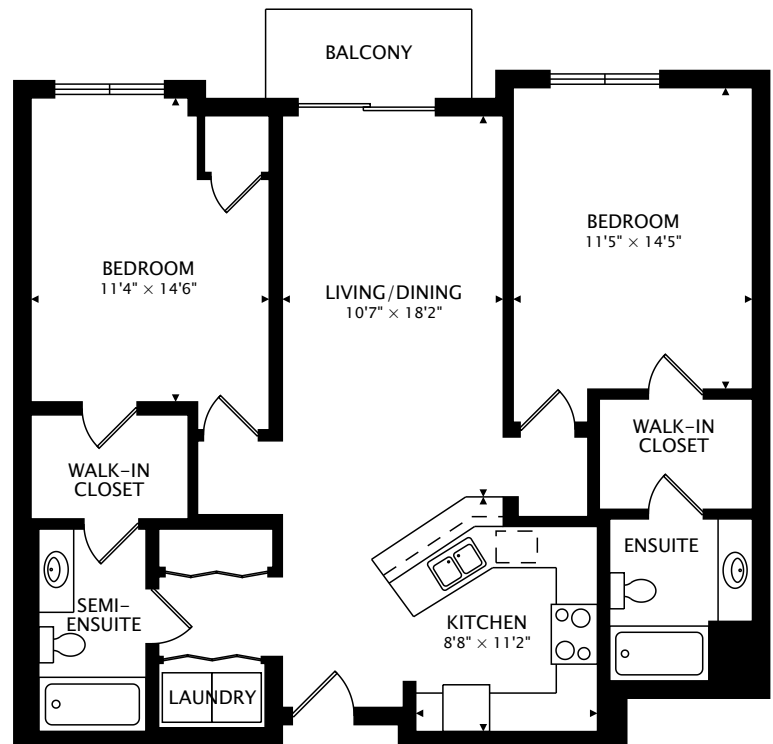
TOTAL



SUITE #4 MAIN
629 sq ft

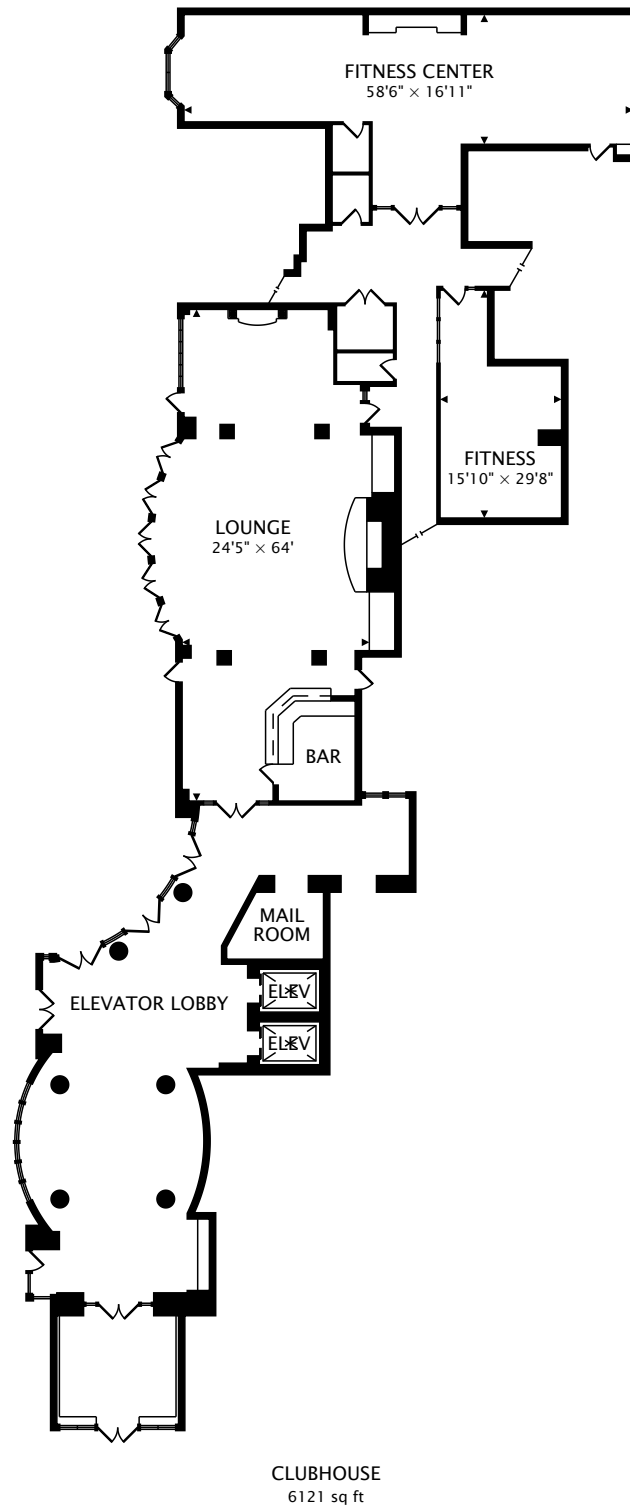


SUITE #4 SECOND
603 sq ft



SUITE #5
1097 sq ft + 42 sq ft BALCONY

TOTAL



TOTAL