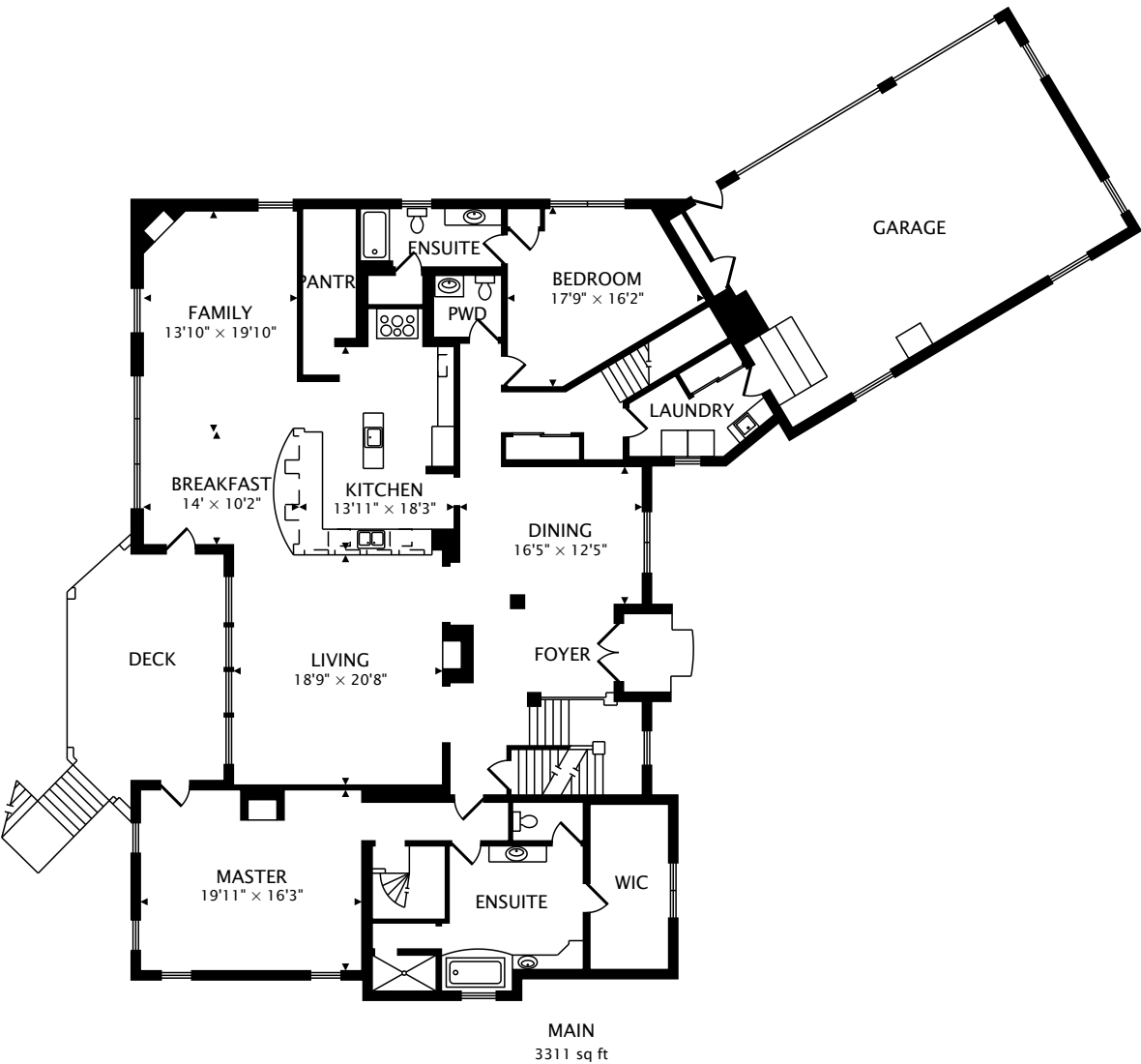


TOTAL  
4976 sq ft + 3267 sq ft BELOW GRADE



CAPTURED ON: 1 JUN 2017  
DIMENSIONS, AREAS, LAYOUTS AND DETAILS ARE APPROXIMATE  
AND SHOULD BE CONSIDERED ILLUSTRATIVE ONLY.

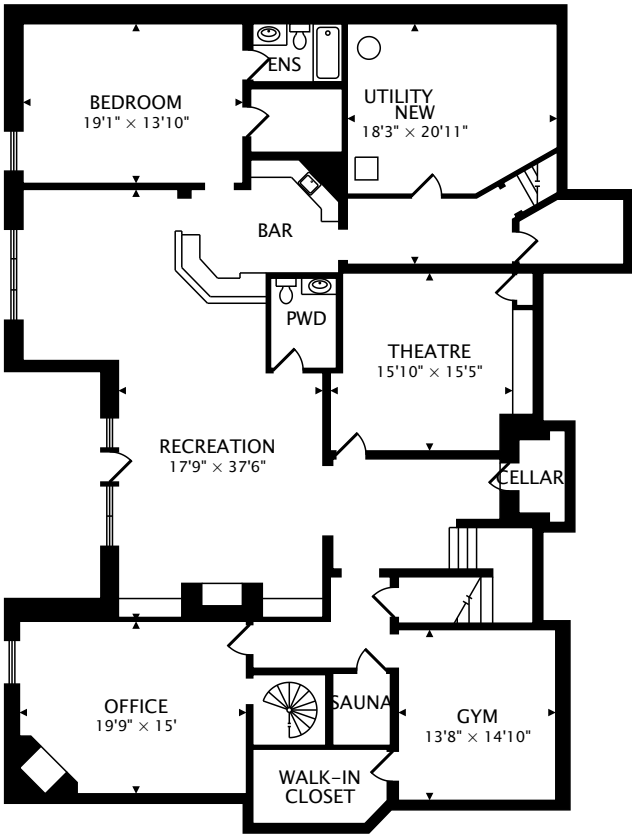
1721 GRAND CYPRESS BLVD  
WAYNESVILLE, OH 45068



TOTAL  
4976 sq ft + 3267 sq ft BELOW GRADE



CAPTURED ON: 1 JUN 2017  
DIMENSIONS, AREAS, LAYOUTS AND DETAILS ARE APPROXIMATE  
AND SHOULD BE CONSIDERED ILLUSTRATIVE ONLY.



LOWER  
3267 sq ft BELOW GRADE

TOTAL  
4976 sq ft + 3267 sq ft BELOW GRADE