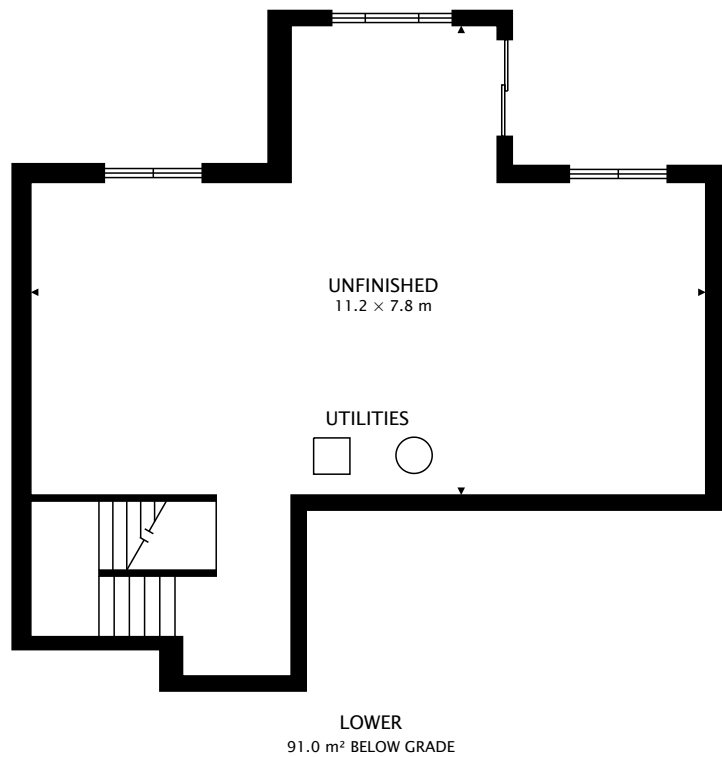
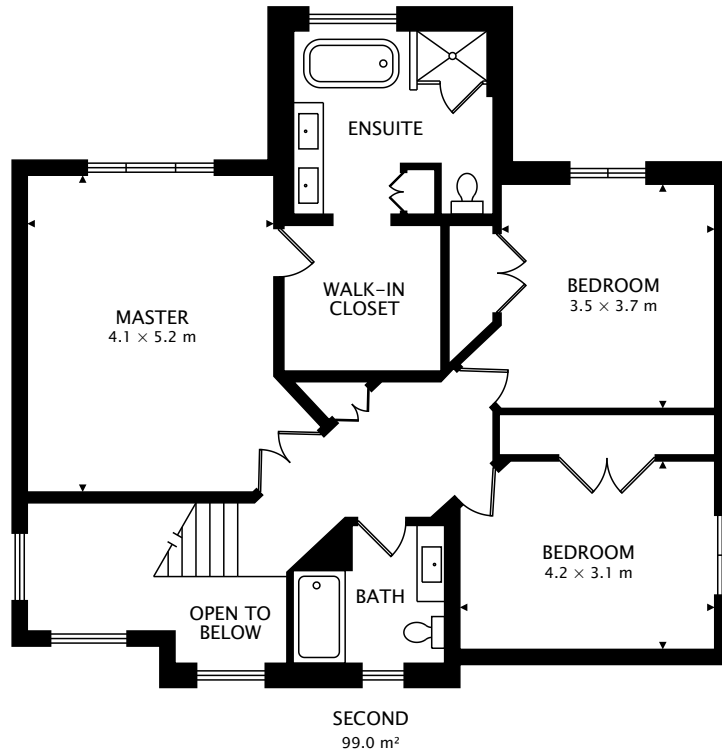


TOTAL
192.8 m² + 91.0 m² BELOW GRADE



CAPTURED ON: 25 JUL 2017
DIMENSIONS, AREAS, LAYOUTS AND DETAILS ARE APPROXIMATE
AND SHOULD BE CONSIDERED ILLUSTRATIVE ONLY.



TOTAL
192.8 m² + 91.0 m² BELOW GRADE



CAPTURED ON: 25 JUL 2017
DIMENSIONS, AREAS, LAYOUTS AND DETAILS ARE APPROXIMATE
AND SHOULD BE CONSIDERED ILLUSTRATIVE ONLY.