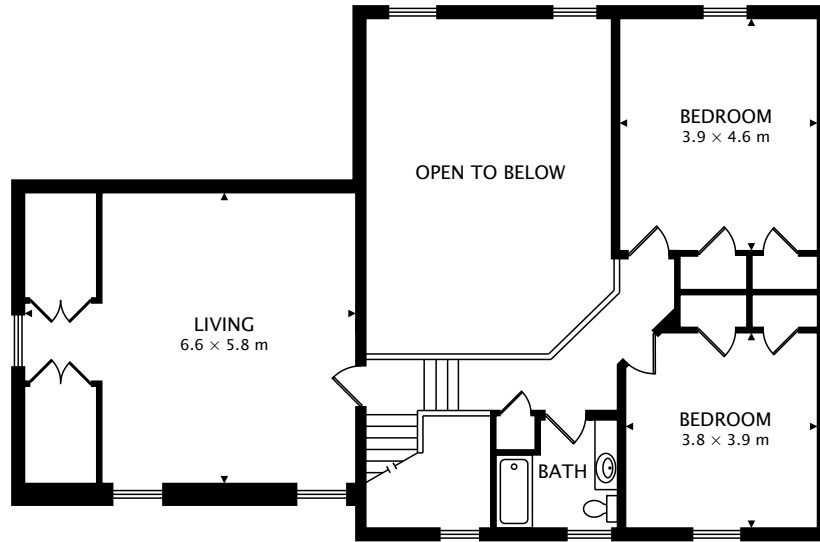


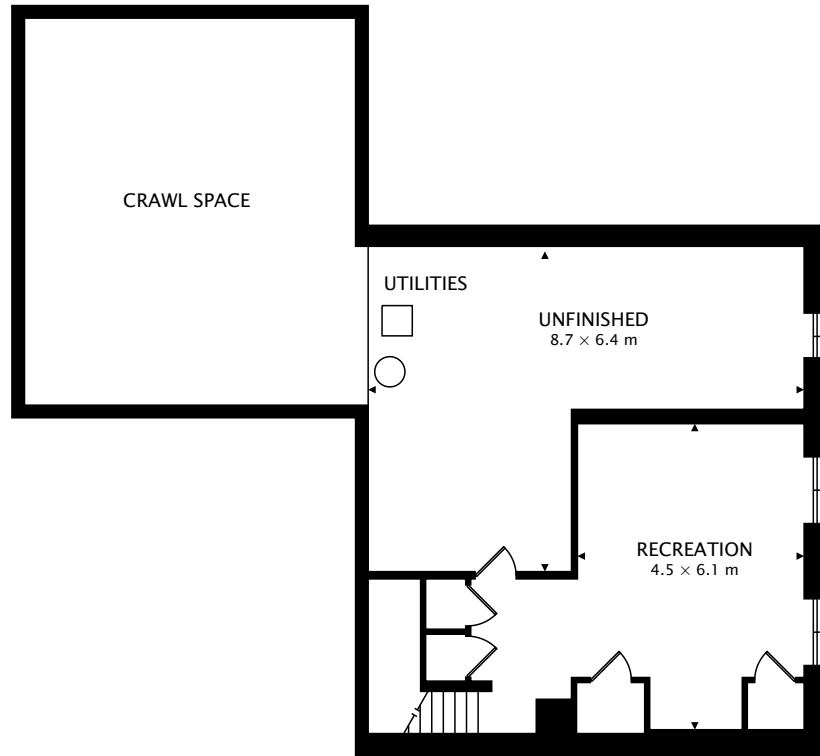
TOTAL
261.7 m² + 99.9 m² BELOW GRADE



CAPTURED ON: 18 JUL 2018
DIMENSIONS, AREAS, LAYOUTS AND DETAILS ARE APPROXIMATE
AND SHOULD BE CONSIDERED ILLUSTRATIVE ONLY.



SECOND
103.2 m²



LOWER
99.9 m² BELOW GRADE

TOTAL
261.7 m² + 99.9 m² BELOW GRADE



CAPTURED ON: 18 JUL 2018
DIMENSIONS, AREAS, LAYOUTS AND DETAILS ARE APPROXIMATE
AND SHOULD BE CONSIDERED ILLUSTRATIVE ONLY.