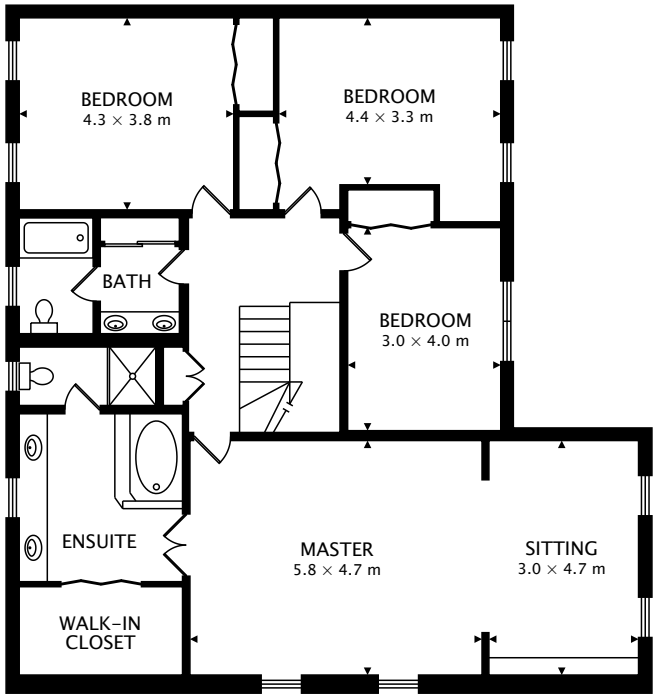


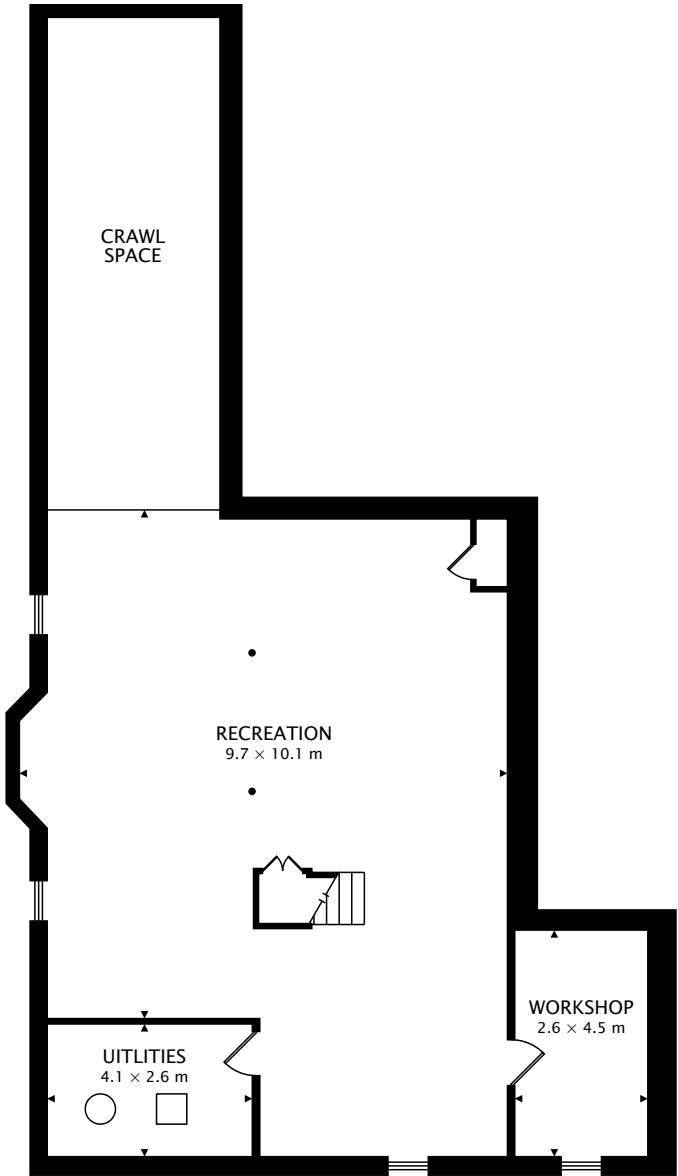
TOTAL
363.1 m² + 150.0 m² BELOW GRADE



CAPTURED ON: 3 APR 2019
DIMENSIONS, AREAS, LAYOUTS AND DETAILS ARE APPROXIMATE
AND SHOULD BE CONSIDERED ILLUSTRATIVE ONLY.



SECOND
146.8 m²



LOWER
150.0 m² BELOW GRADE

TOTAL
363.1 m² + 150.0 m² BELOW GRADE



CAPTURED ON: 3 APR 2019
DIMENSIONS, AREAS, LAYOUTS AND DETAILS ARE APPROXIMATE
AND SHOULD BE CONSIDERED ILLUSTRATIVE ONLY.