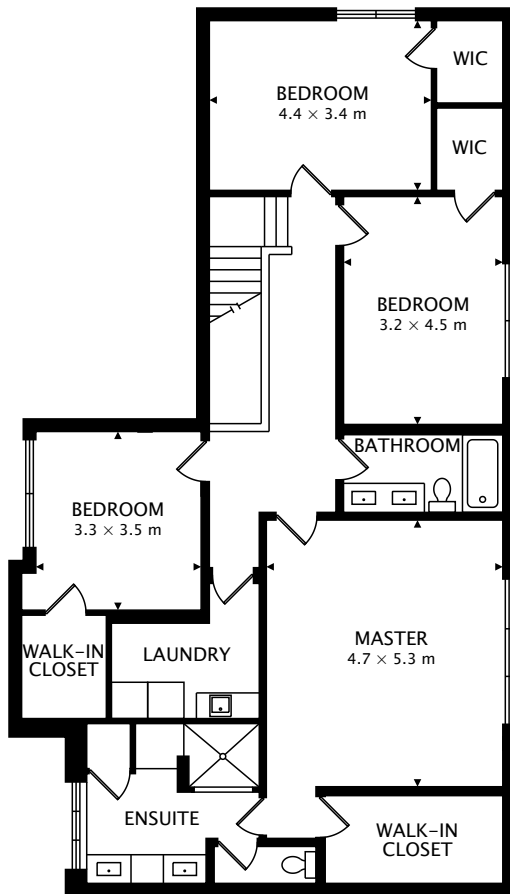


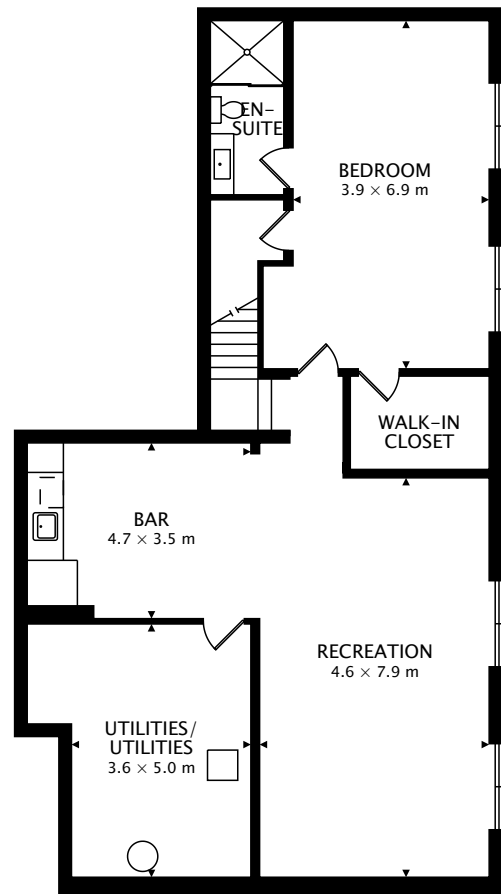
TOTAL
283.5 m² + 133.2 m² BELOW GRADE



CAPTURED ON: 20 APR 2018
DIMENSIONS, AREAS, LAYOUTS AND DETAILS ARE APPROXIMATE
AND SHOULD BE CONSIDERED ILLUSTRATIVE ONLY.



SECOND
142.3 m²



LOWER
133.2 m² BELOW GRADE

TOTAL
283.5 m² + 133.2 m² BELOW GRADE



CAPTURED ON: 20 APR 2018
DIMENSIONS, AREAS, LAYOUTS AND DETAILS ARE APPROXIMATE
AND SHOULD BE CONSIDERED ILLUSTRATIVE ONLY.