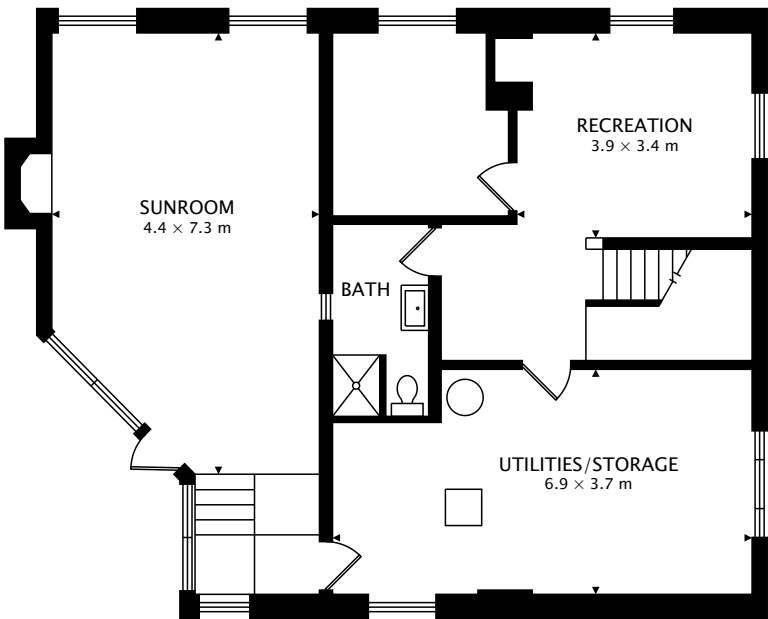


MAIN
89.1 m²



LOWER
69.6 m² BELOW GRADE

TOTAL
89.1 m² + 69.6 m² BELOW GRADE



CAPTURED ON: 21 FEB 2018
DIMENSIONS, AREAS, LAYOUTS AND DETAILS ARE APPROXIMATE
AND SHOULD BE CONSIDERED ILLUSTRATIVE ONLY.