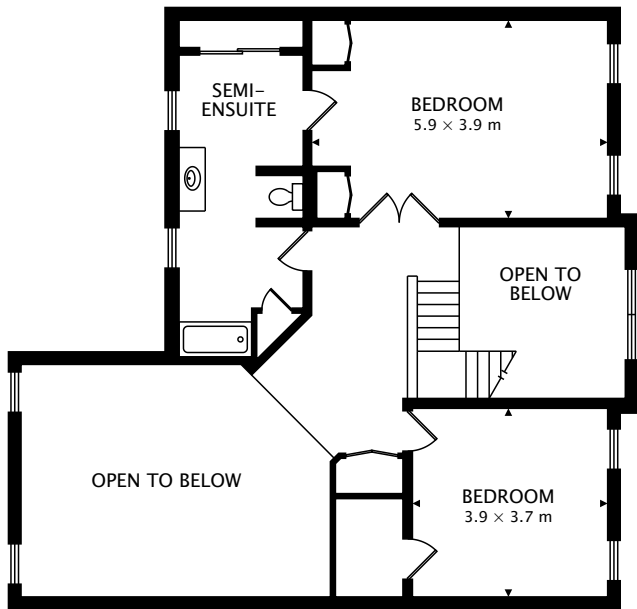


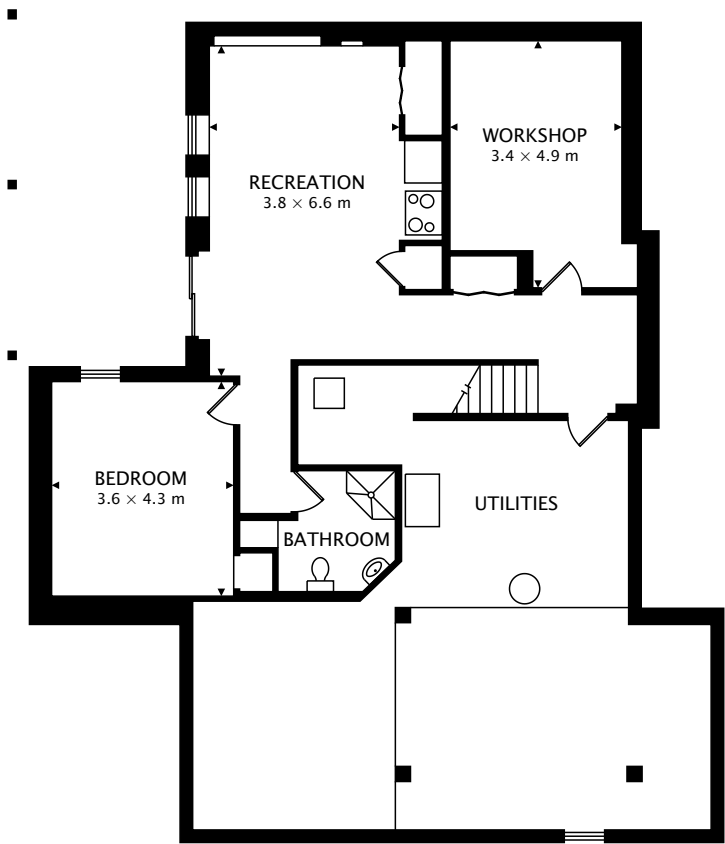
TOTAL
279.5 m² + 172.4 m² BELOW GRADE



CAPTURED ON: 31 OCT 2017
DIMENSIONS, AREAS, LAYOUTS AND DETAILS ARE APPROXIMATE
AND SHOULD BE CONSIDERED ILLUSTRATIVE ONLY.



SECOND
80.8 m²



LOWER
172.4 m² BELOW GRADE

TOTAL
279.5 m² + 172.4 m² BELOW GRADE



CAPTURED ON: 31 OCT 2017
DIMENSIONS, AREAS, LAYOUTS AND DETAILS ARE APPROXIMATE
AND SHOULD BE CONSIDERED ILLUSTRATIVE ONLY.