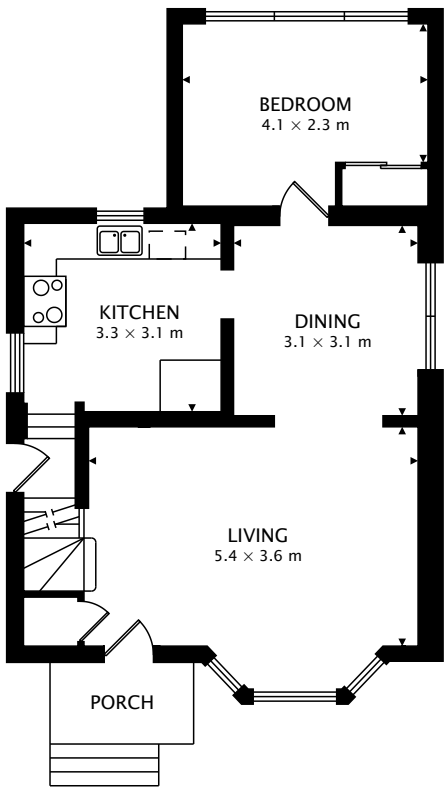
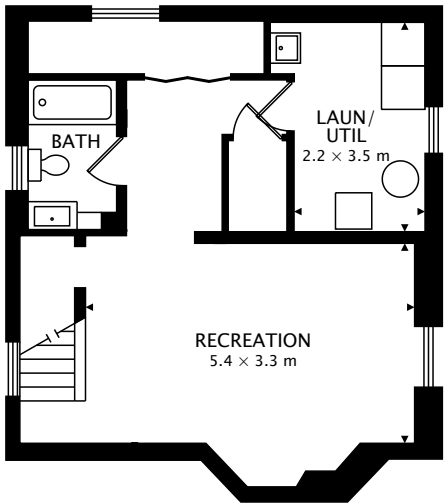


SECOND
54.2 m²



MAIN
70.9 m²



LOWER
52.8 m² BELOW GRADE

TOTAL
125.1 m² + 52.8 m² BELOW GRADE



CAPTURED ON: 24 FEB 2019
DIMENSIONS, AREAS, LAYOUTS AND DETAILS ARE APPROXIMATE
AND SHOULD BE CONSIDERED ILLUSTRATIVE ONLY.