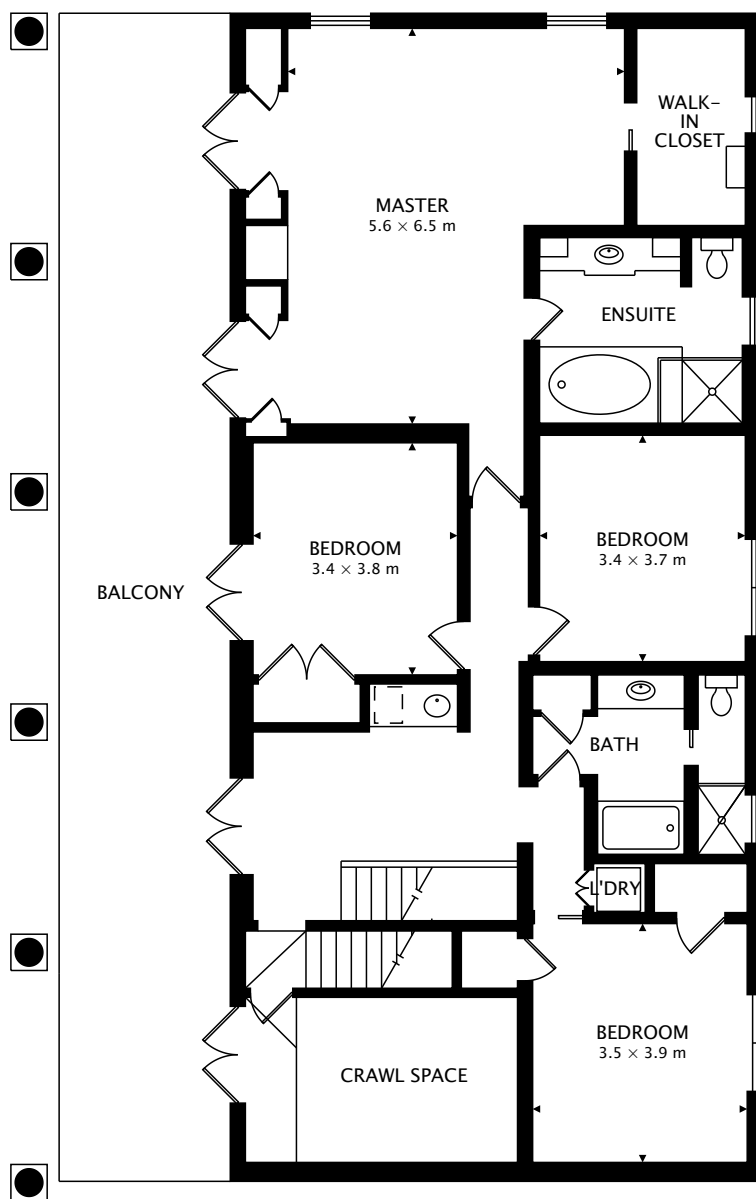


TOTAL
487.9 m² + 131.5 m² BELOW GRADE



CAPTURED ON: 12 MAR 2019
DIMENSIONS, AREAS, LAYOUTS AND DETAILS ARE APPROXIMATE
AND SHOULD BE CONSIDERED ILLUSTRATIVE ONLY.

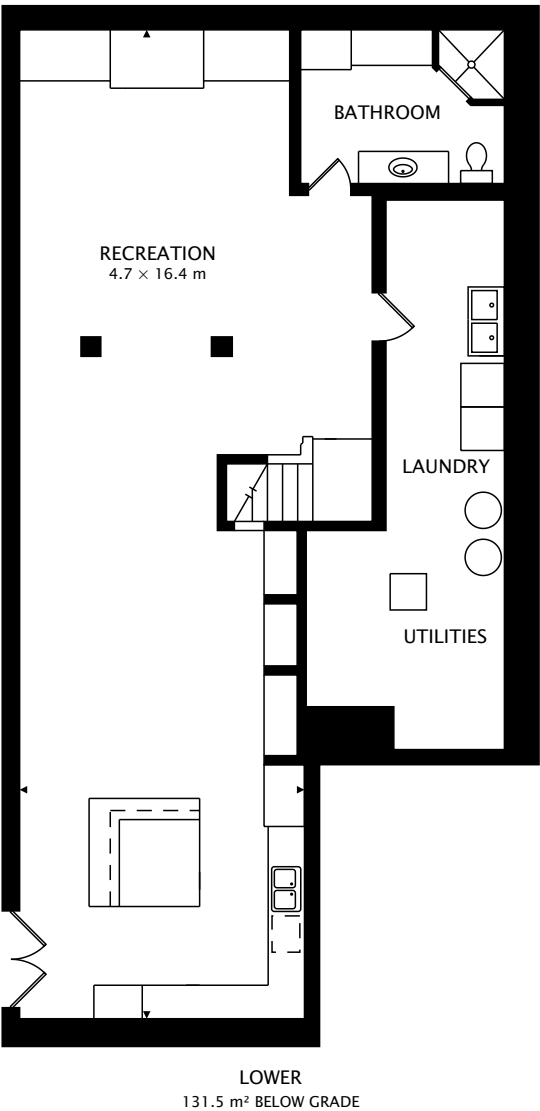
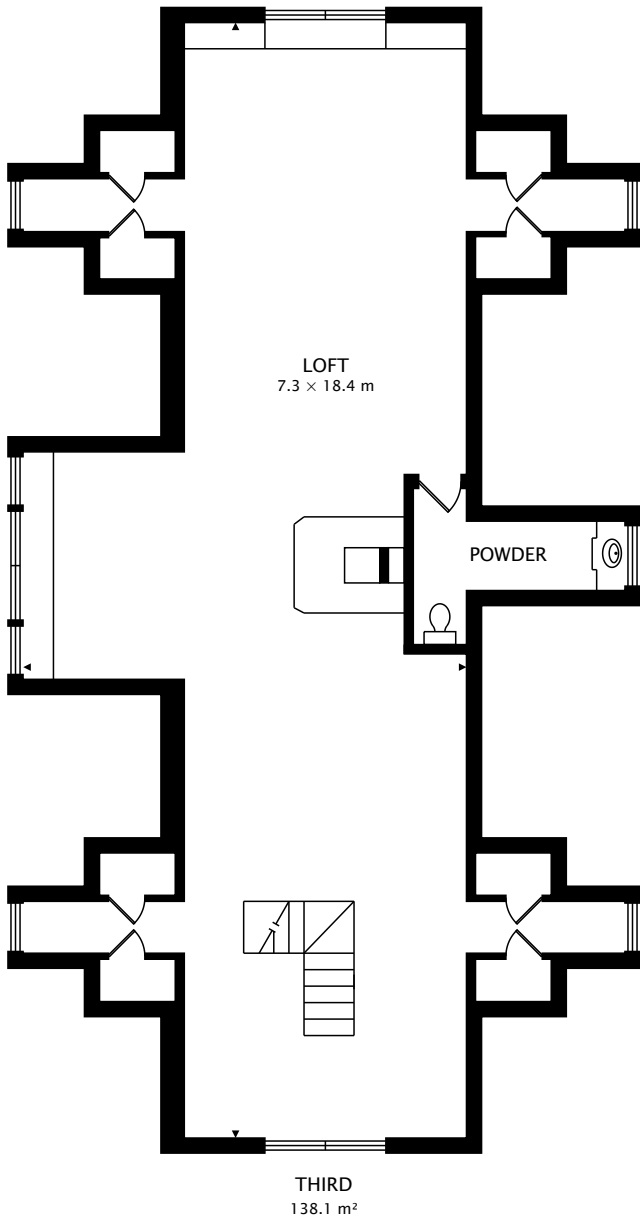


SECOND
167.5 m²

TOTAL
487.9 m² + 131.5 m² BELOW GRADE



CAPTURED ON: 12 MAR 2019
DIMENSIONS, AREAS, LAYOUTS AND DETAILS ARE APPROXIMATE
AND SHOULD BE CONSIDERED ILLUSTRATIVE ONLY.



TOTAL
487.9 m² + 131.5 m² BELOW GRADE



CAPTURED ON: 12 MAR 2019
DIMENSIONS, AREAS, LAYOUTS AND DETAILS ARE APPROXIMATE
AND SHOULD BE CONSIDERED ILLUSTRATIVE ONLY.