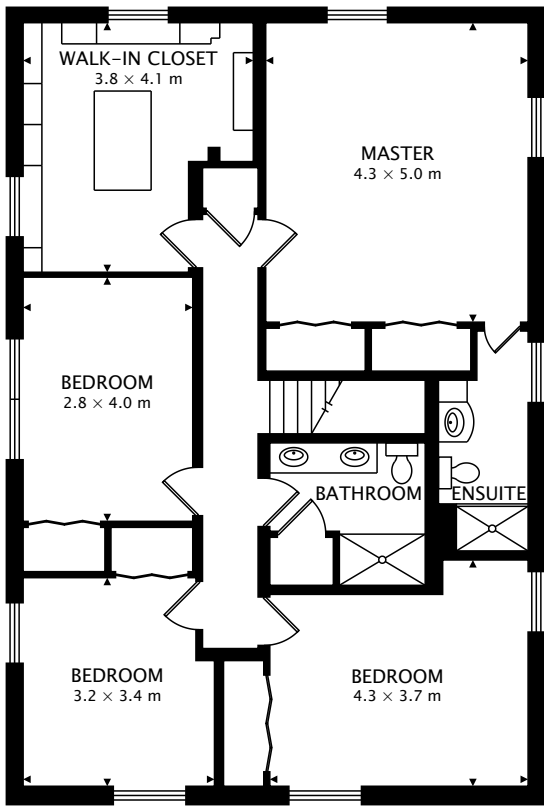


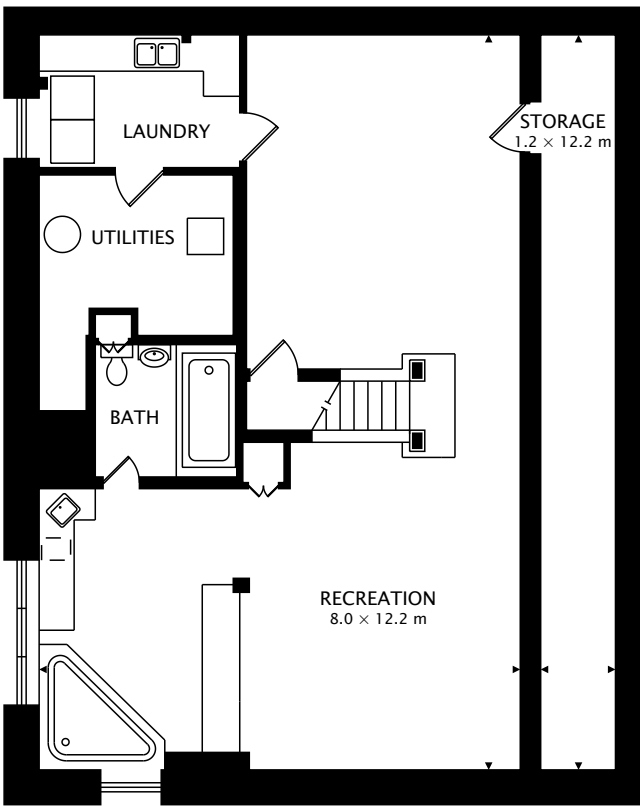
TOTAL  
234.7 m² + 136.4 m² BELOW GRADE



CAPTURED ON: 4 DEC 2017  
DIMENSIONS, AREAS, LAYOUTS AND DETAILS ARE APPROXIMATE  
AND SHOULD BE CONSIDERED ILLUSTRATIVE ONLY.



SECOND  
117.4 m<sup>2</sup>



LOWER  
136.4 m<sup>2</sup> BELOW GRADE

TOTAL  
234.7 m<sup>2</sup> + 136.4 m<sup>2</sup> BELOW GRADE



CAPTURED ON: 4 DEC 2017  
DIMENSIONS, AREAS, LAYOUTS AND DETAILS ARE APPROXIMATE  
AND SHOULD BE CONSIDERED ILLUSTRATIVE ONLY.