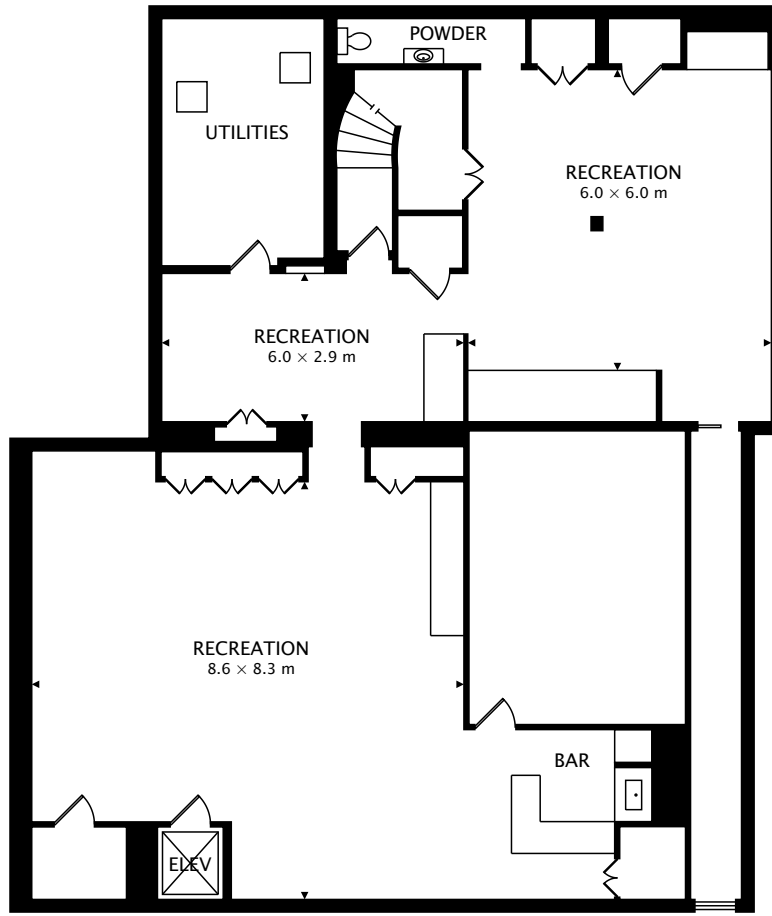


TOTAL
679.0 m² + 246.8 m² BELOW GRADE



CAPTURED ON: 16 APR 2018

DIMENSIONS, AREAS, LAYOUTS AND DETAILS ARE APPROXIMATE
AND SHOULD BE CONSIDERED ILLUSTRATIVE ONLY.

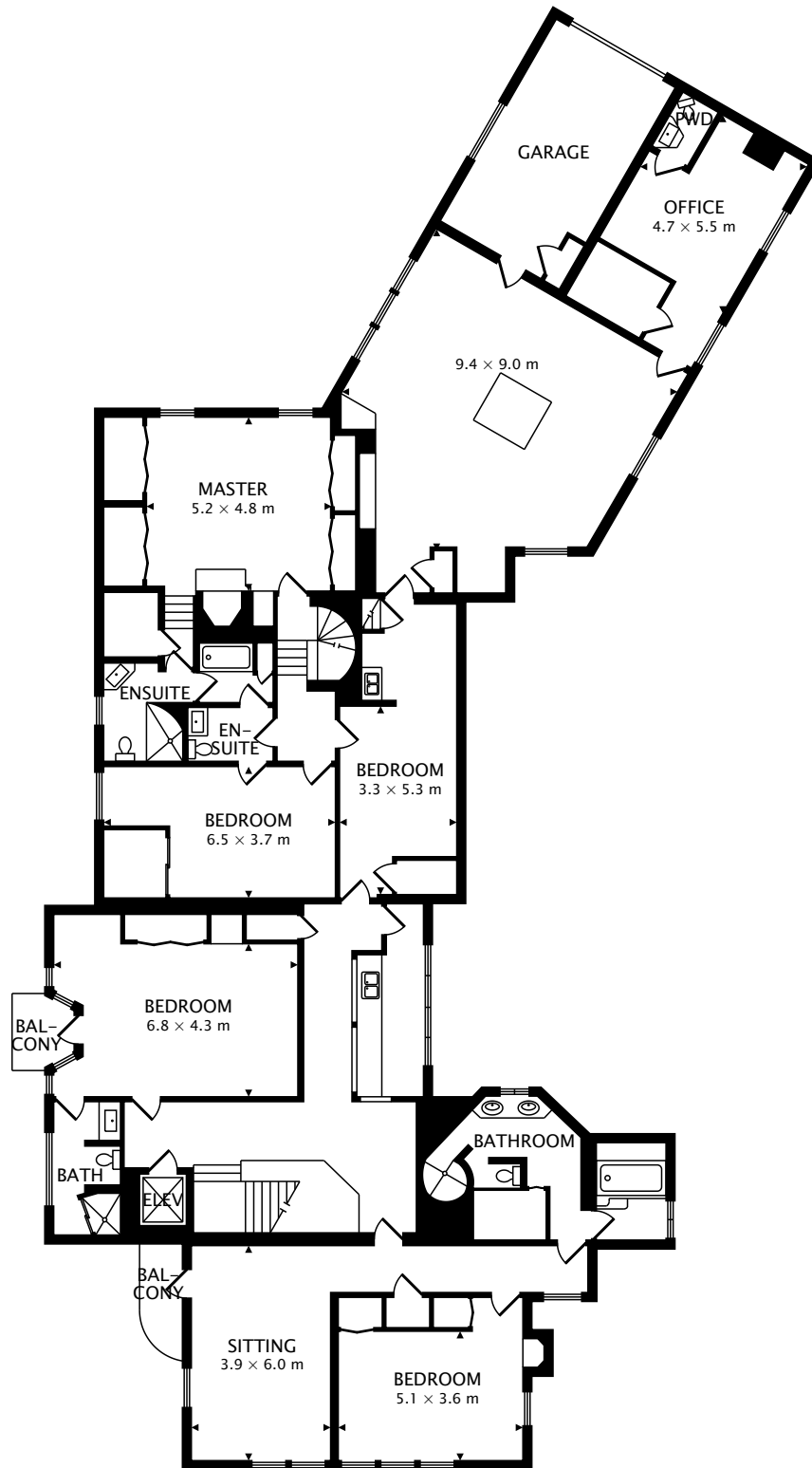


LOWER
246.8 m² BELOW GRADE

TOTAL
679.0 m² + 246.8 m² BELOW GRADE

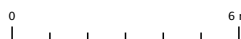


CAPTURED ON: 16 APR 2018
DIMENSIONS, AREAS, LAYOUTS AND DETAILS ARE APPROXIMATE
AND SHOULD BE CONSIDERED ILLUSTRATIVE ONLY.



SECOND
407.3 m²

TOTAL
679.0 m² + 246.8 m² BELOW GRADE



CAPTURED ON: 16 APR 2018
DIMENSIONS, AREAS, LAYOUTS AND DETAILS ARE APPROXIMATE
AND SHOULD BE CONSIDERED ILLUSTRATIVE ONLY.