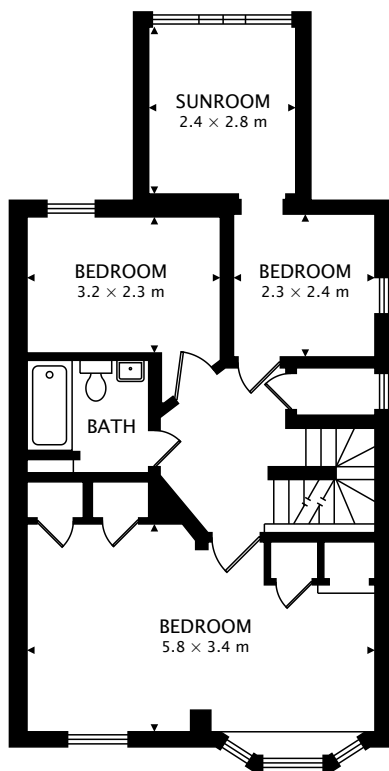
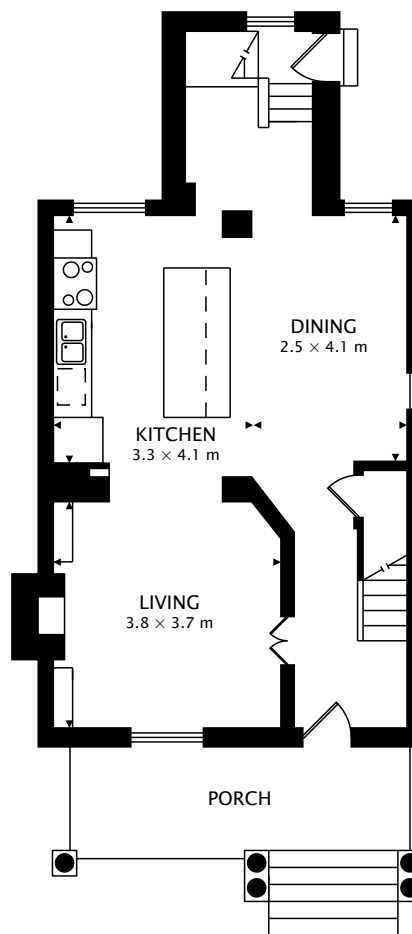


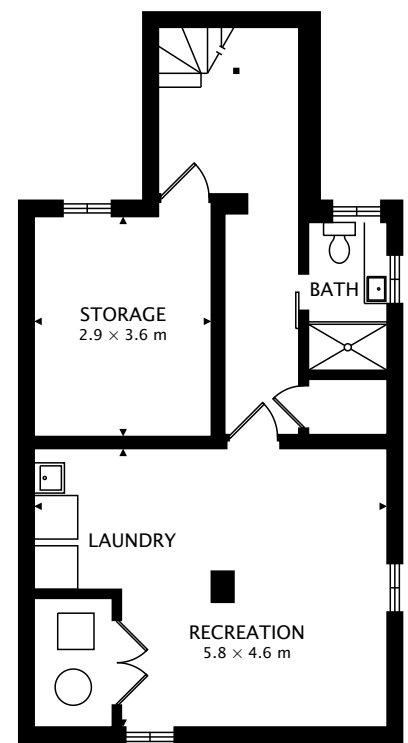
THIRD
46.1 m²



SECOND
67.3 m²



MAIN
63.8 m²



LOWER
64.7 m² BELOW GRADE

TOTAL
177.1 m² + 64.7 m² BELOW GRADE



CAPTURED ON: 12 FEB 2019
DIMENSIONS, AREAS, LAYOUTS AND DETAILS ARE APPROXIMATE
AND SHOULD BE CONSIDERED ILLUSTRATIVE ONLY.