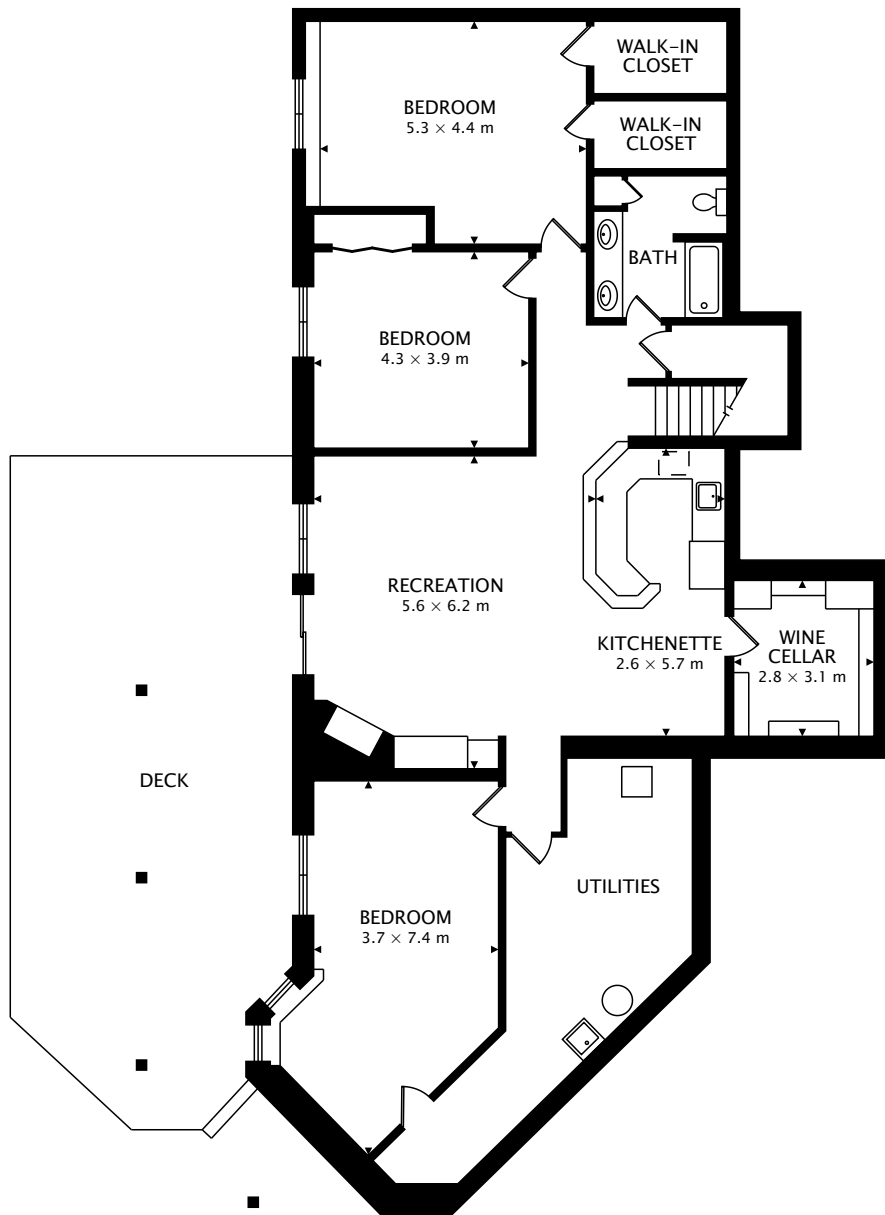


MAIN
209.9 m²

TOTAL
209.9 m² + 203.2 m² BELOW GRADE



CAPTURED ON: 15 MAR 2018
DIMENSIONS, AREAS, LAYOUTS AND DETAILS ARE APPROXIMATE
AND SHOULD BE CONSIDERED ILLUSTRATIVE ONLY.



LOWER
203.2 m² BELOW GRADE

TOTAL
209.9 m² + 203.2 m² BELOW GRADE



CAPTURED ON: 15 MAR 2018
DIMENSIONS, AREAS, LAYOUTS AND DETAILS ARE APPROXIMATE
AND SHOULD BE CONSIDERED ILLUSTRATIVE ONLY.