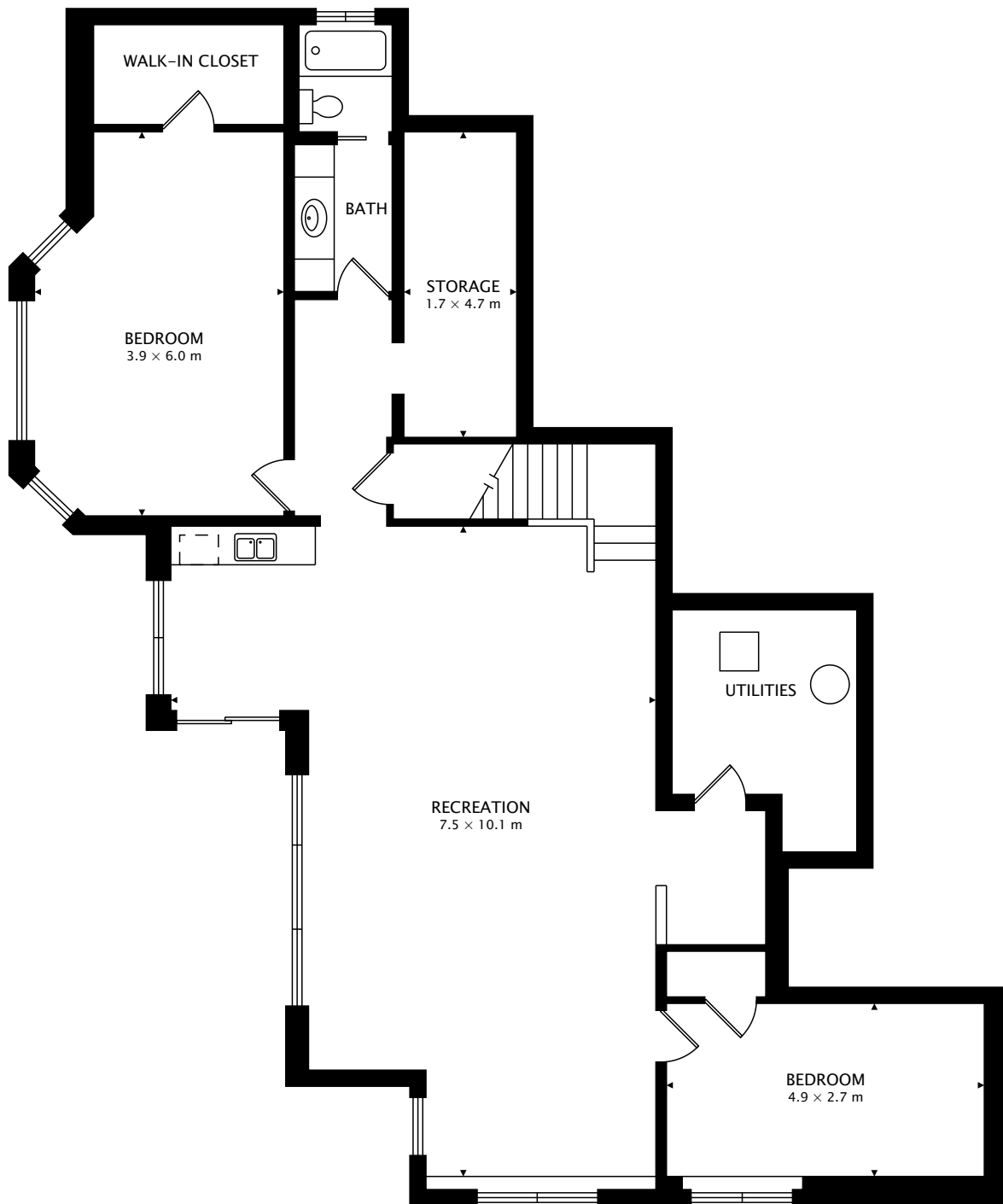


TOTAL  
163.9 m<sup>2</sup> + 156.0 m<sup>2</sup> BELOW GRADE



CAPTURED ON: 10 AUG 2017  
DIMENSIONS, AREAS, LAYOUTS AND DETAILS ARE APPROXIMATE  
AND SHOULD BE CONSIDERED ILLUSTRATIVE ONLY.



LOWER  
156.0 m<sup>2</sup> BELOW GRADE

TOTAL  
163.9 m<sup>2</sup> + 156.0 m<sup>2</sup> BELOW GRADE



CAPTURED ON: 10 AUG 2017  
DIMENSIONS, AREAS, LAYOUTS AND DETAILS ARE APPROXIMATE  
AND SHOULD BE CONSIDERED ILLUSTRATIVE ONLY.