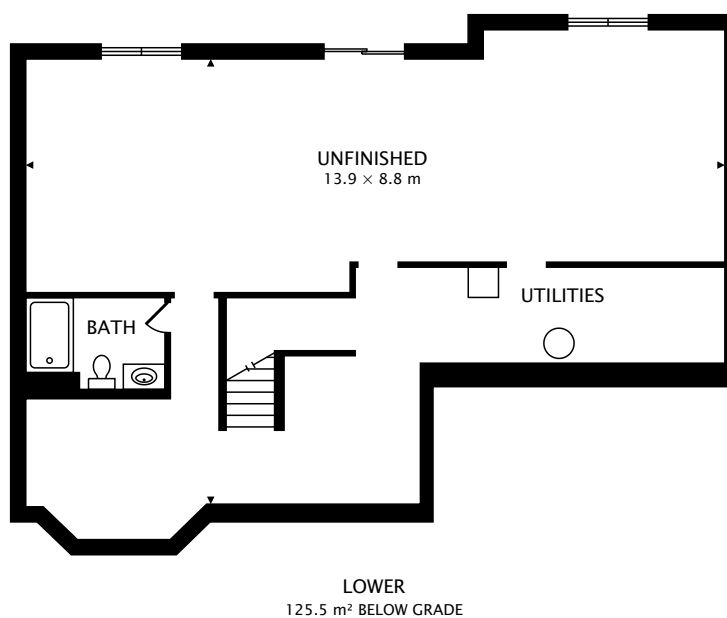
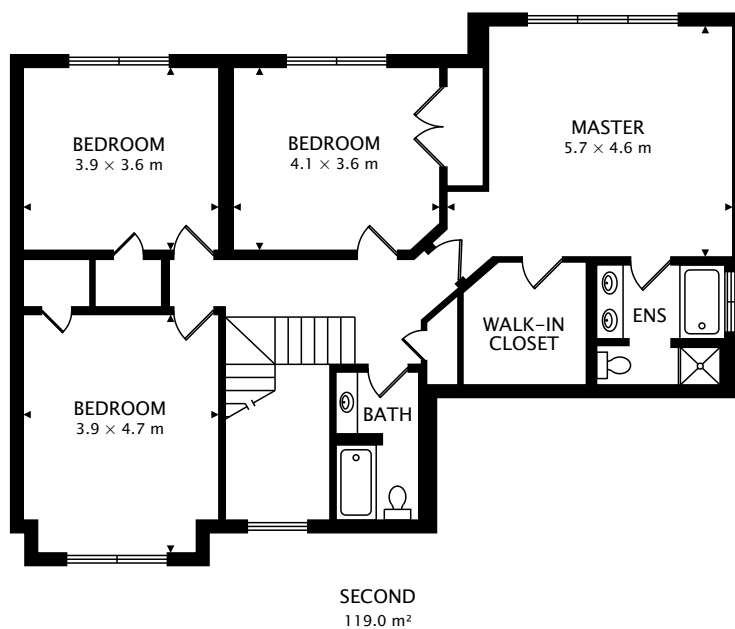


TOTAL
247.3 m² + 125.5 m² BELOW GRADE



CAPTURED ON: 9 OCT 2017
DIMENSIONS, AREAS, LAYOUTS AND DETAILS ARE APPROXIMATE
AND SHOULD BE CONSIDERED ILLUSTRATIVE ONLY.



TOTAL
247.3 m² + 125.5 m² BELOW GRADE



CAPTURED ON: 9 OCT 2017
DIMENSIONS, AREAS, LAYOUTS AND DETAILS ARE APPROXIMATE
AND SHOULD BE CONSIDERED ILLUSTRATIVE ONLY.