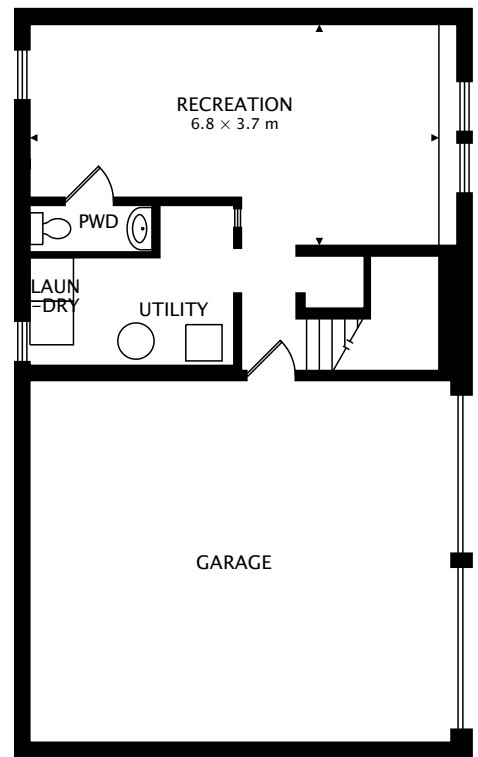


MAIN
101.0 m²



LOWER
43.7 m² BELOW GRADE

TOTAL
101.0 m² + 43.7 m² BELOW GRADE



CAPTURED ON: 4 APR 2017
DIMENSIONS, AREAS, LAYOUTS AND DETAILS ARE APPROXIMATE
AND SHOULD BE CONSIDERED ILLUSTRATIVE ONLY.